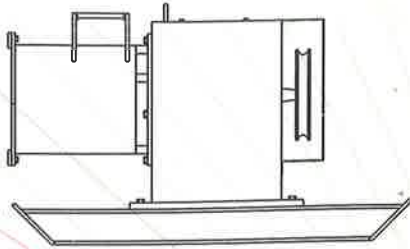


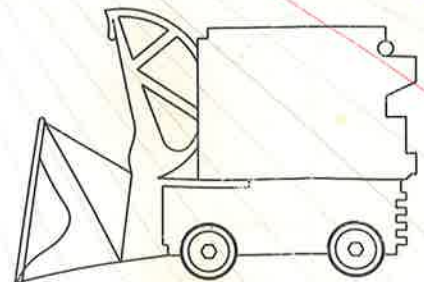
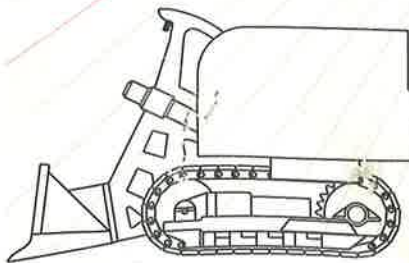
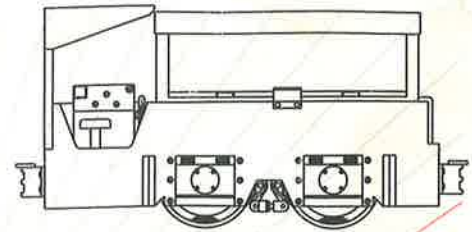


**Mono Rope
Winches**



goodman

locomotives

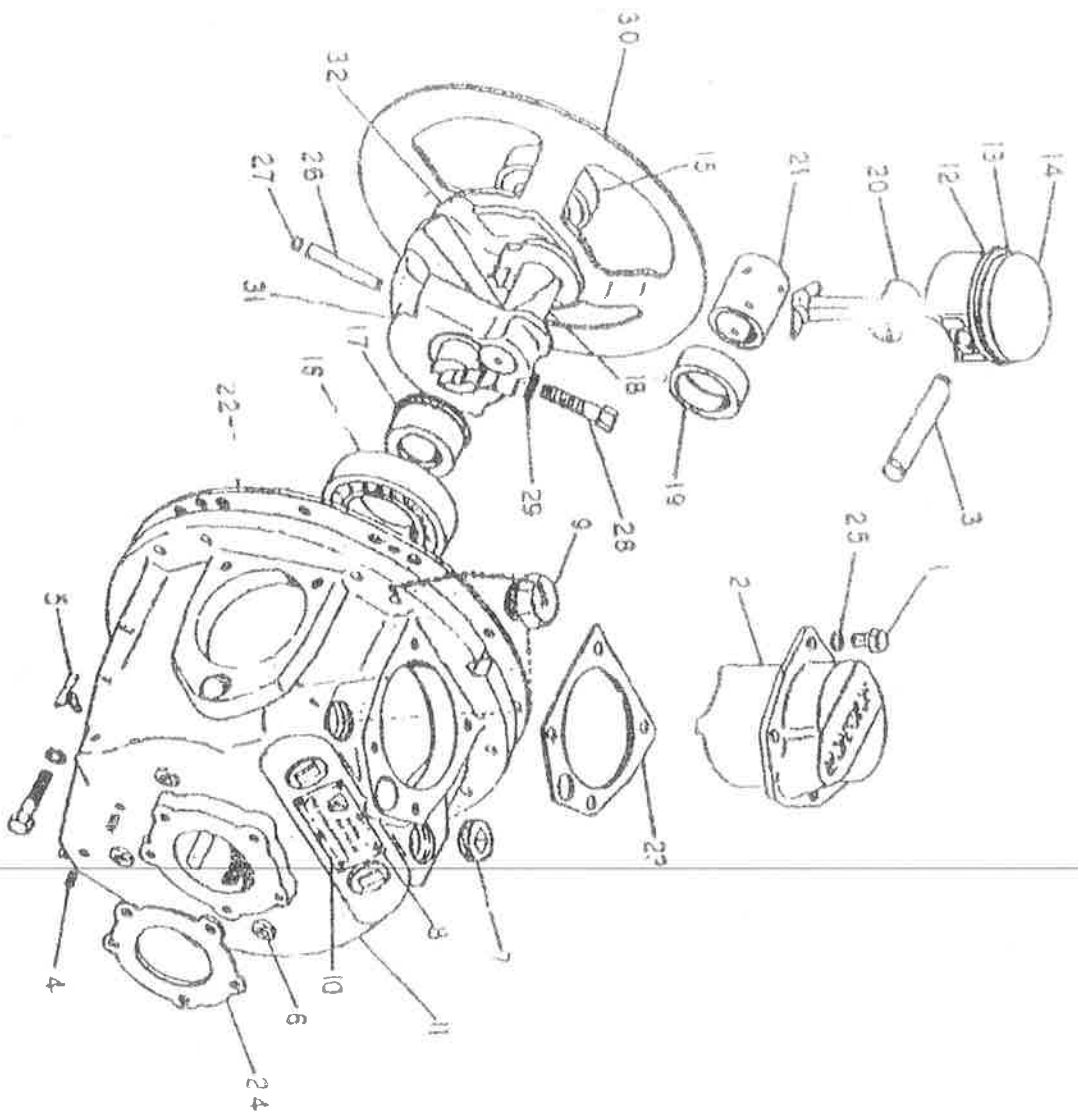


**Eimco
Rocker Shovel**



TRIDENT S.A.

**EIMCO 632 H SIDE TIP LOADER
MANUEL**



EIMCO 632 H LOADER

Air motor arrangement

CRAWLER MOTOR - (271 - 77)

Crawler motor, Winch motor and Hydraulic motor - same items

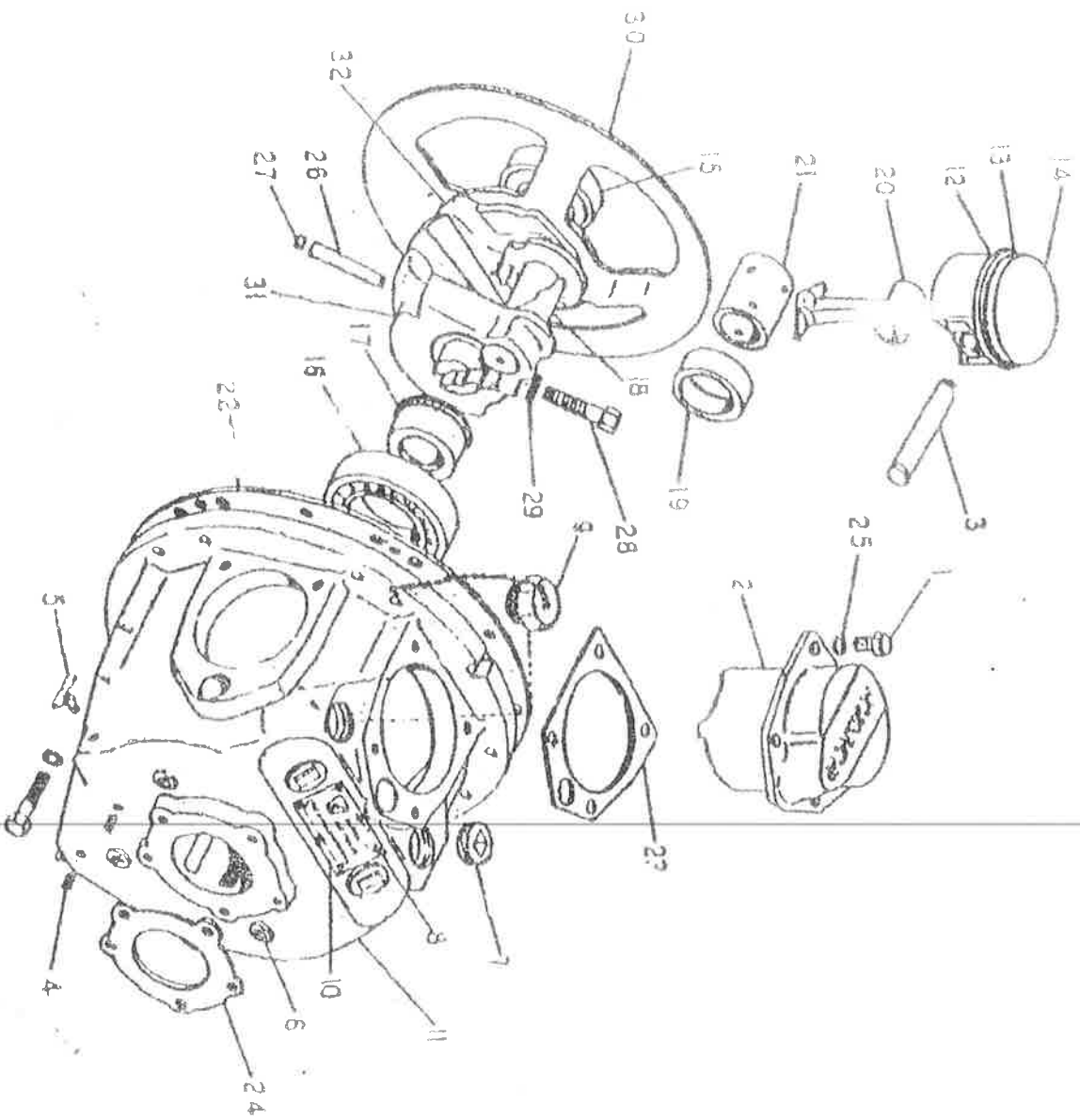
Item no:	Part no:	Max Qty:	Description:
1	T8GG16	20	Cap Screw
2	201-744	5	Cylinder
3	271-134	5	Wrist Pin
	201-762	1	Motor Housing Assembly
	271-221	5	Piston Group
	271-144	1	Crankshaft Group
	271-28	1	Gaskets

MOTOR HOUSING ASSEMBLY - (201-762)

Item no:	Part no:	Max Qty:	Description:
4	P2BP	4	Pipe Plug
5	P2RVD	1	Cock Drain
6	P5RVD	3	Plug
7	P7JPA	3	Pipe Plug
8	T1000	6	Drive Screw
9	200-84	1	Vent Cap assembly
10	201-82	1	Name Plate
11	201-763	1	Motor Housing

PISTON GROUP - (271-221)

Item no:	Part no:	Max Qty:	Description:
12	201-73	1	Oil ring
13	201-72	1	Compression rings
14	271-222	1	Piston



EIMCO 632 H LOADER

Crankshaft group

COMPLETE CRANKSHAFT GRP - (271-144)

Item no:	Part no:	Max Qty:	Description:
15	G230	1	Bearing Shielded
16	G278	1	Bearing
17	201-733	1	Adaptor Bearing
18	201-759	1	Crankshaft Sleeve
19	271-129	2	Retaining Ring
20	271-130	5	Connecting Rod
21	271-136	1	Bushing Assembly
	271-151	1	Crankshaft Assembly

GASKET SET - (271-28)

Item no:	Part no:	Max Qty:	Description:
22	21-196	1	Motor Mounting Gasket
23	201-64	5	Cylinder Gasket
24	SGB29D	1	Valve Housing Gasket
25	201-99	20	Washer, Cylinder Cap Screw

CRANKSHAFT ASSEMBLY - (271-151)

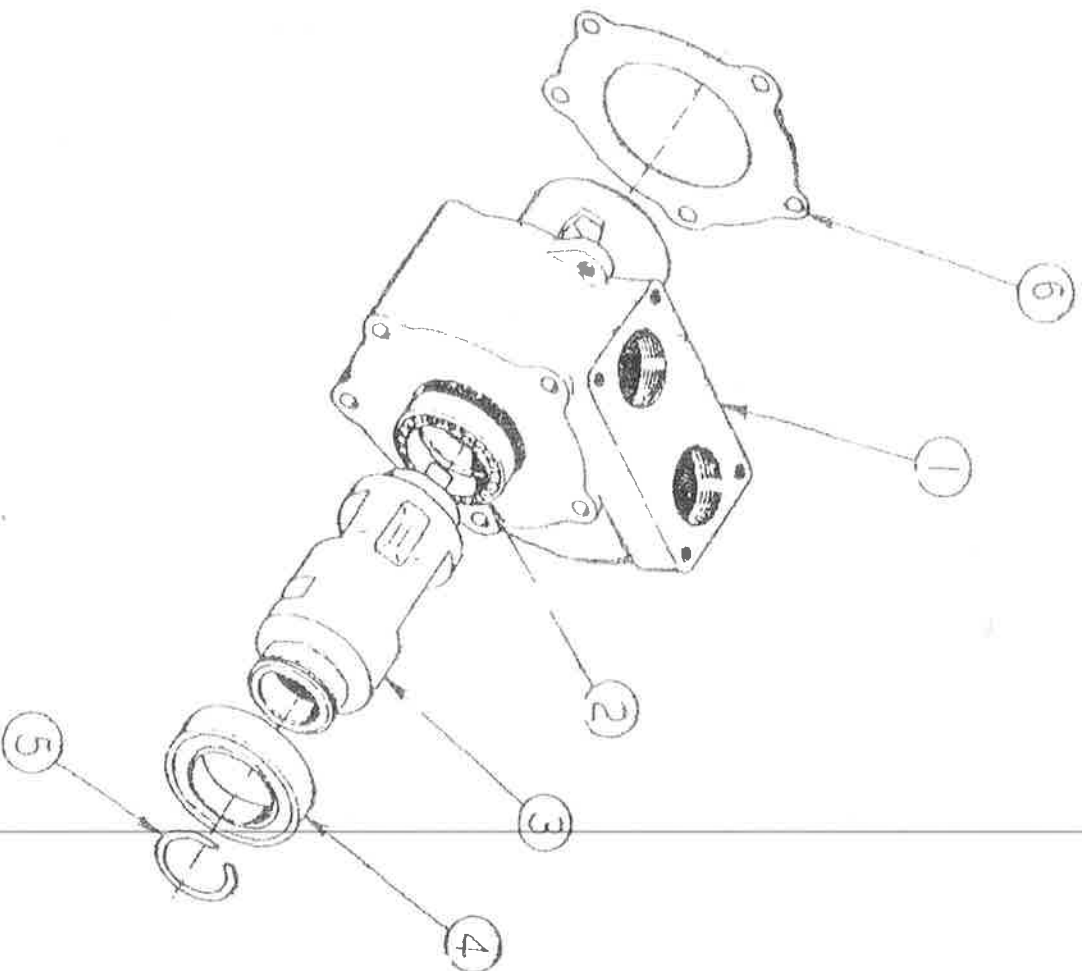
Item no:	Part no:	Max Qty:	Description:
26	KT58	1	Taper Pin
27	T12GSM28	1	Set Screw
28	T8HG24	1	Cap Screw
29	W8GF	1	Lock Washer
30	201-70	1	Oil Slinger
31	271-208	1	Crankshaft Cheek
32	271-209	1	Crankshaft

EMCO 632 HLOADER

Valve housing

VALVE HOUSING GROUP - (271-5)

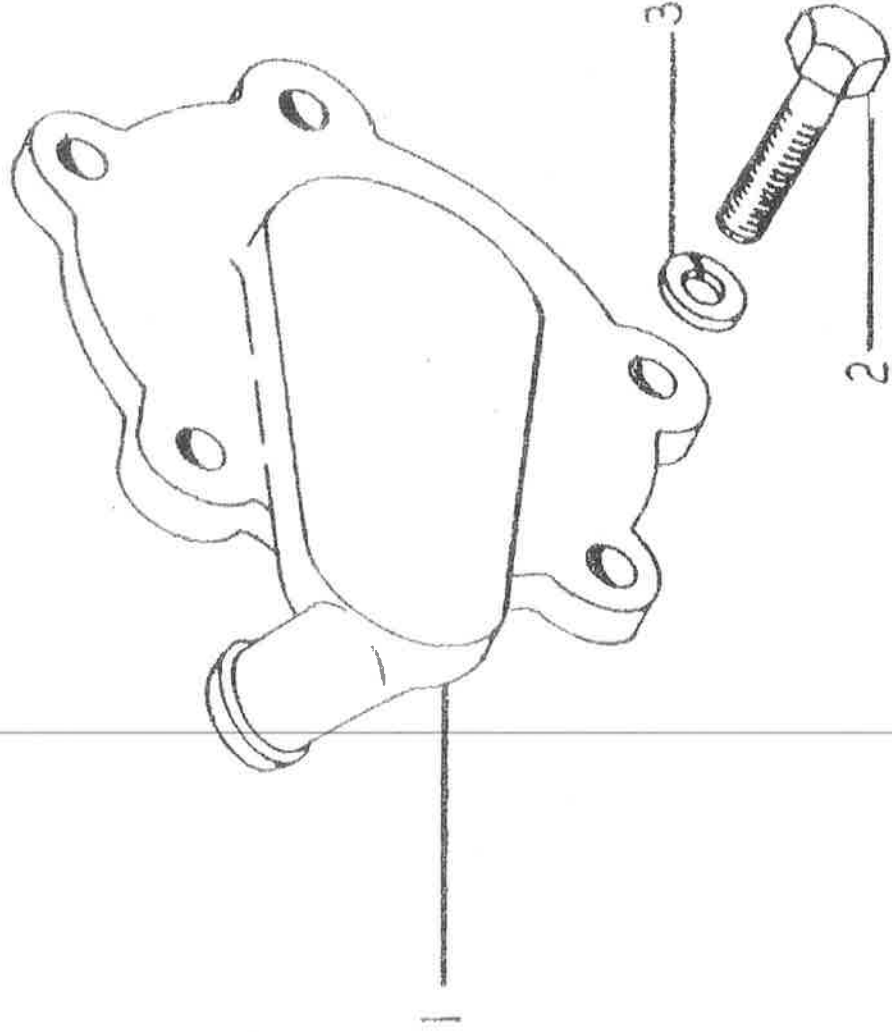
Item no:	Part no:	Max Qty:	Description:
1	271-4	1	Valve Housing
2	G134	1	Bearing
3	271-2	1	Rotary Valve
4	G267	1	Bearing
5	L1126	1	Retainer Ring
6	SGB29D	1	Valve Housing Gasket



EIMCO 632 H LOADER

Cover valve housing

Item no:	Part no:	Max Qty:	Description:
1	271-78	1	Cover valve housing
2	T6GG72	5	Cap Screw
3	W6GF	5	Lock Washer

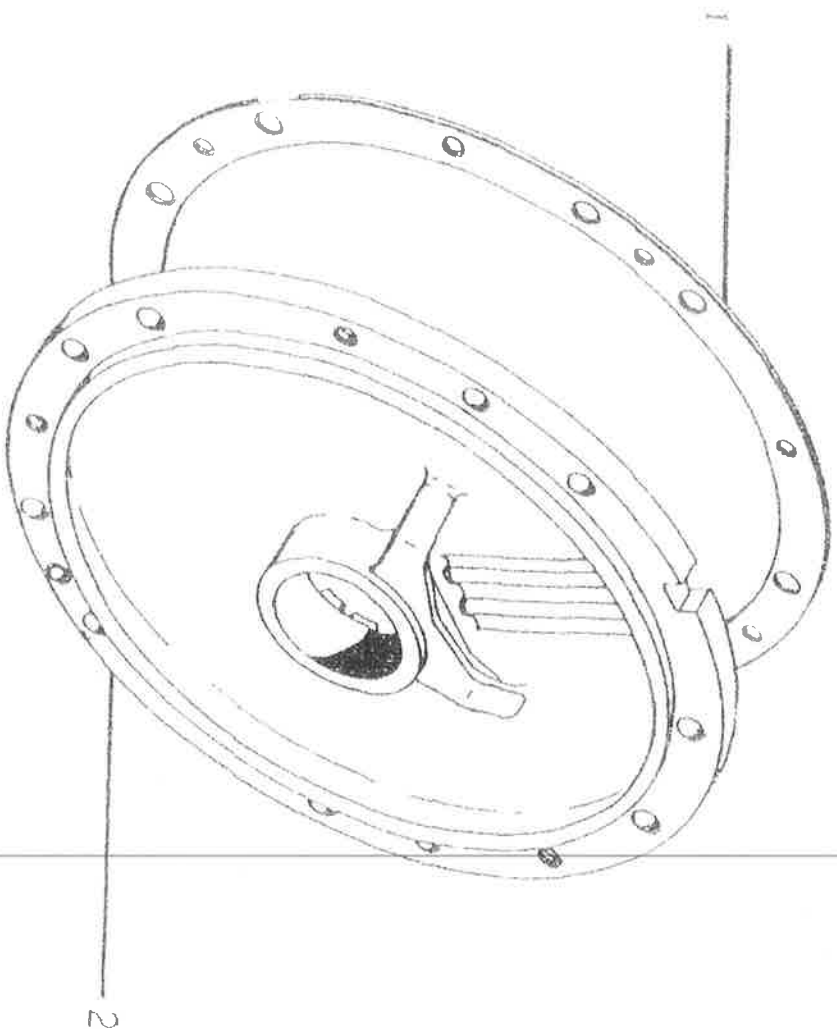


EMCO 632 H LOADER

Motor Mounting Cover

MOTOR MOUNTING COVER - (630-243)

Item no:	Part no:	Max Qty:	Description:
1	21-196	1	Gasket
2	630-243	1	Motor Mounting Cover
3	S219	1	Seal (Not Shown)

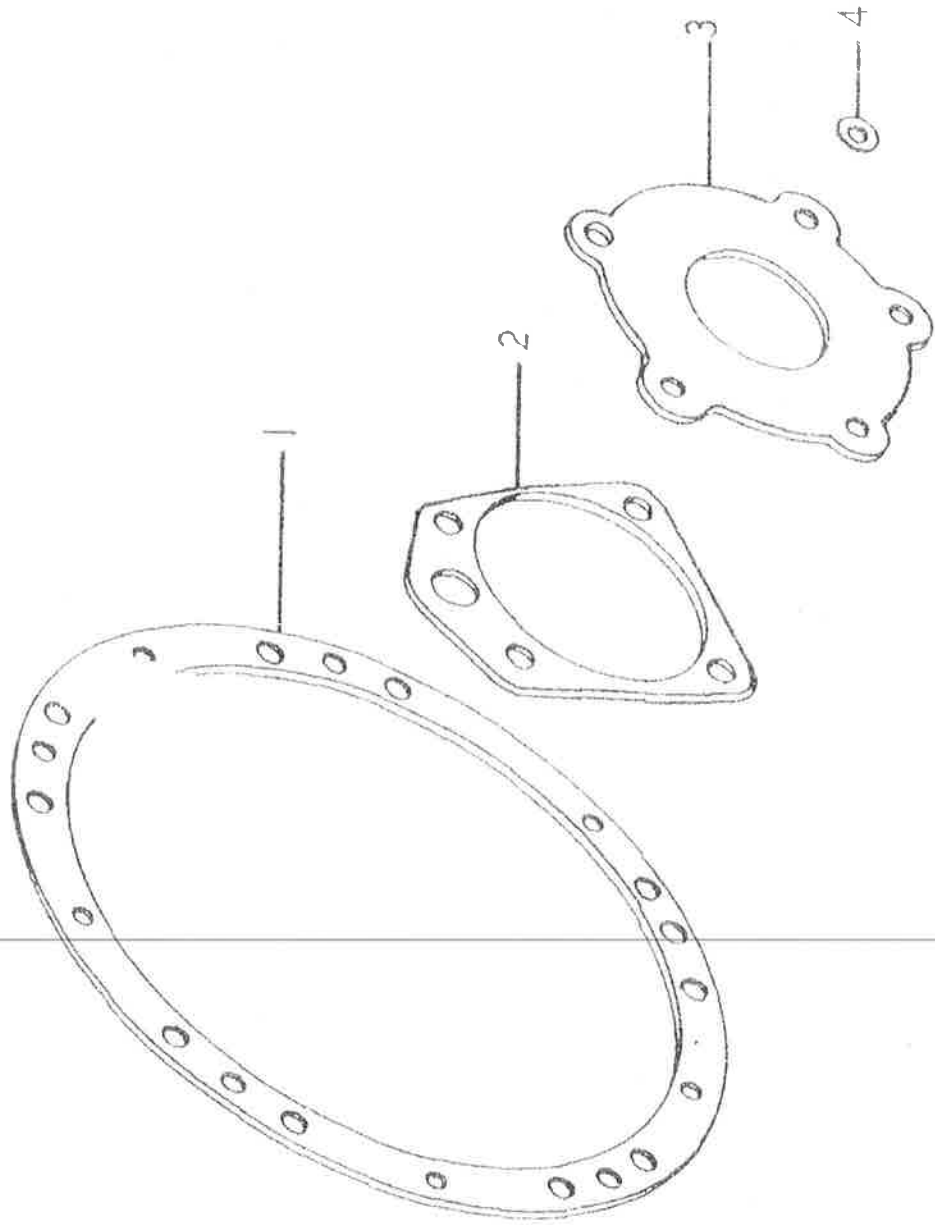


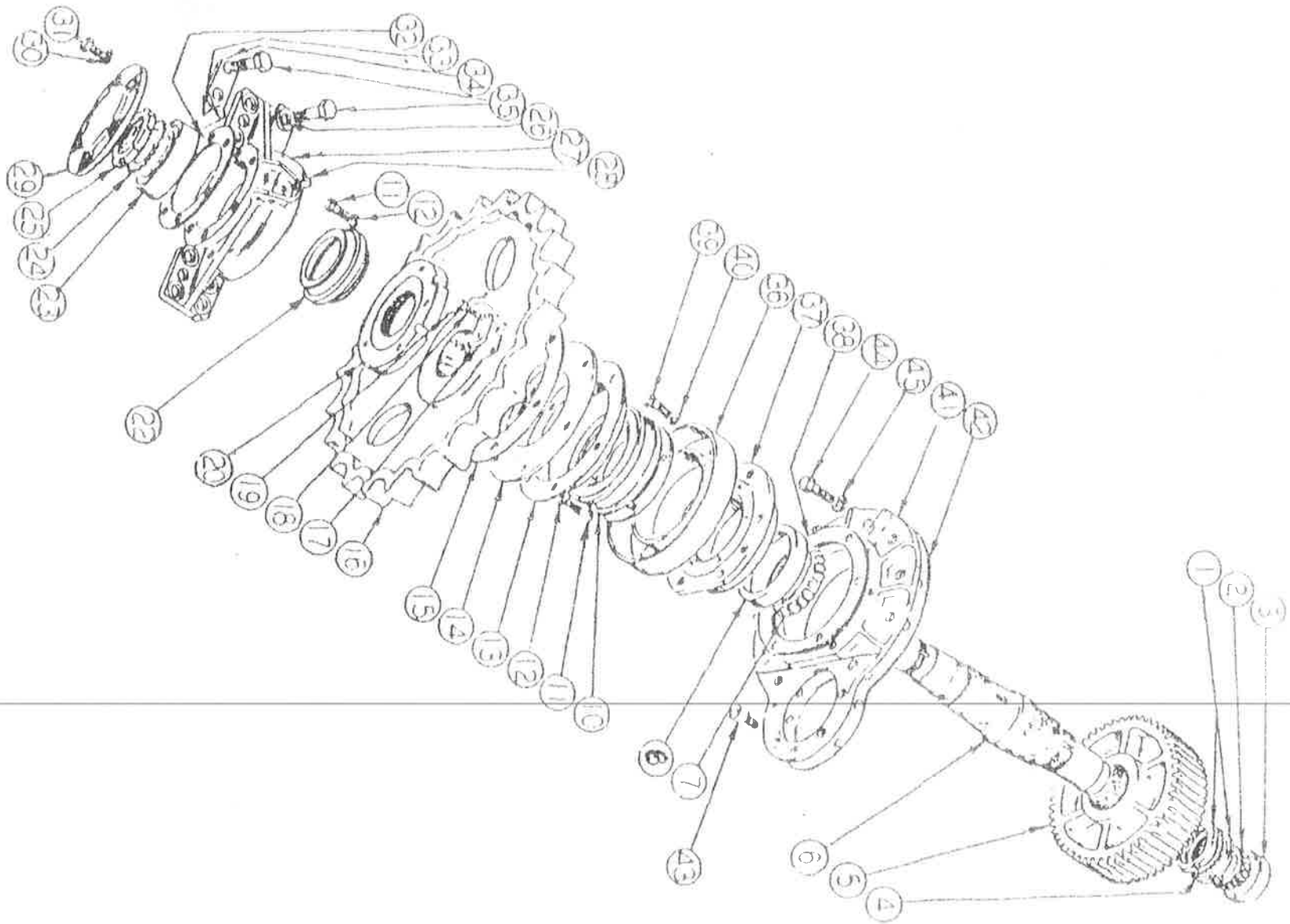
EIMCO 632 H LOADER

Gasket Set

GASKET SET - (271-27)

Item no:	Part no:	Max Qty:	Description:
1	21-196	2	Motor Mounting Gasket
2	201-64	5	Cylinder Gasket
3	SGB29D	1	Valve Housing Gasket
4	201-99	20	Washer Cylinder Cap Screw



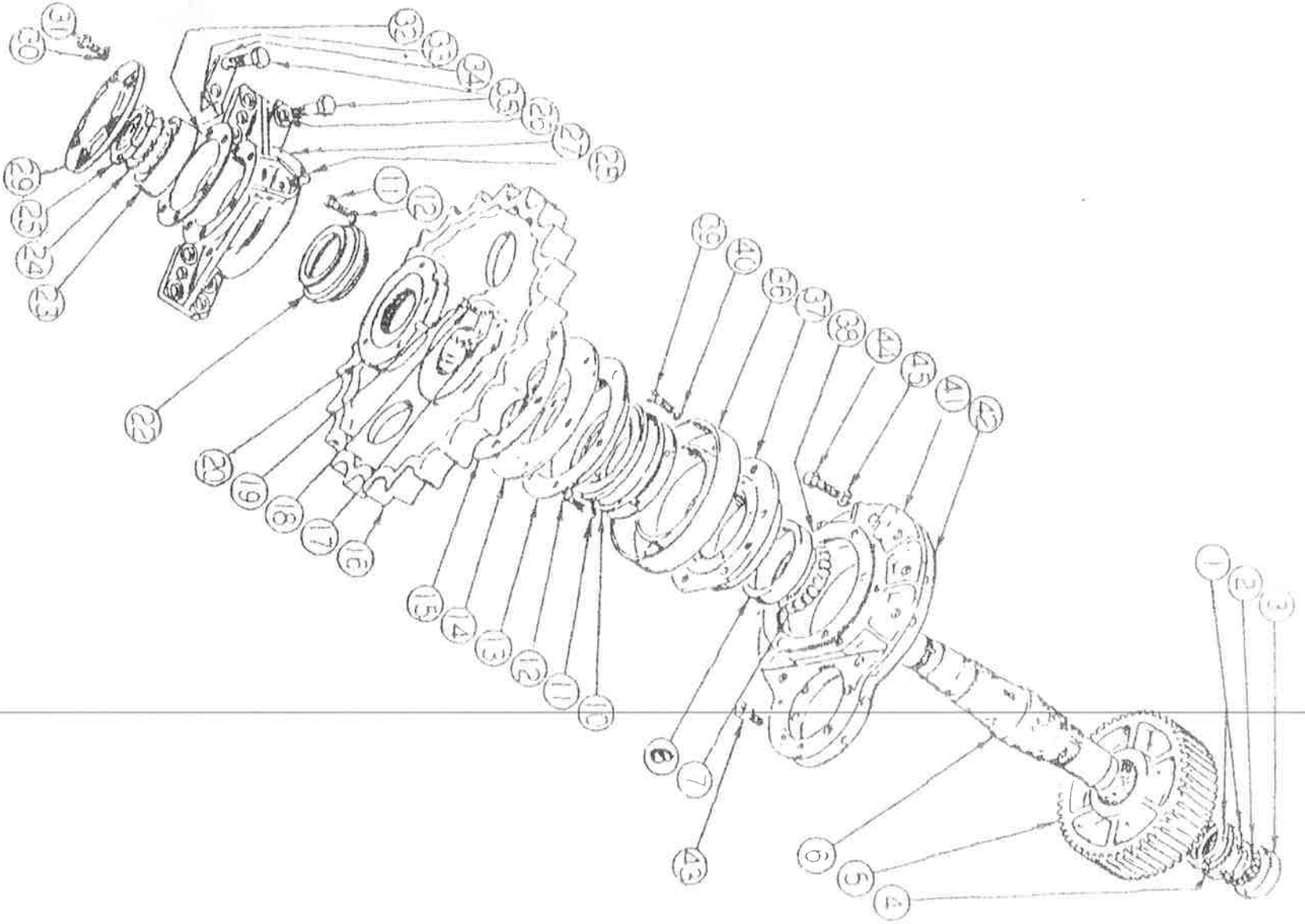


EIMCO 632 H LOADER

Final Drive Shaft Group

FINAL DRIVE SHAFT GROUP - (630-7396)

Item no:	Part no:	Max Qty:	Description:
1	L28	2	Lock Nut
2	G527	1	Bearing Cone
3	G528	1	Bearing Cup
4	L58	1	Lock Washer
5	630-139	1	Gear
6	630-195	1	Shaft
7	G529	1	Bearing Cone
8	G530	1	Bearing Cup
9	S2639	1	Back Up Gasket
10	S2638	1	Seal Inboard (includes item 9)
11	8GG20	12	Cap Screw
12	W8GF	12	Lock Washer
13	630-182	1	Seal Guard Inboard
14	630-181	1	Seal Plate Inboard
15	SGA58A	1	Gasket
16	630-6223	1	Track Sprocket (12 teeth)
17	105-529	1	Lock Plate
18	8GGW20	1	Cap Screw
19	L400	1	Lock Wire
20	630-7378	1	Sprocket Lock Nut
21	S2692	2	O-ring (includes item 21)
22	SM2691	1	Seal Plate Outboard
23	G172	1	Bearing
24	L654	1	Lock Washer
25	L824	1	Lock Nut

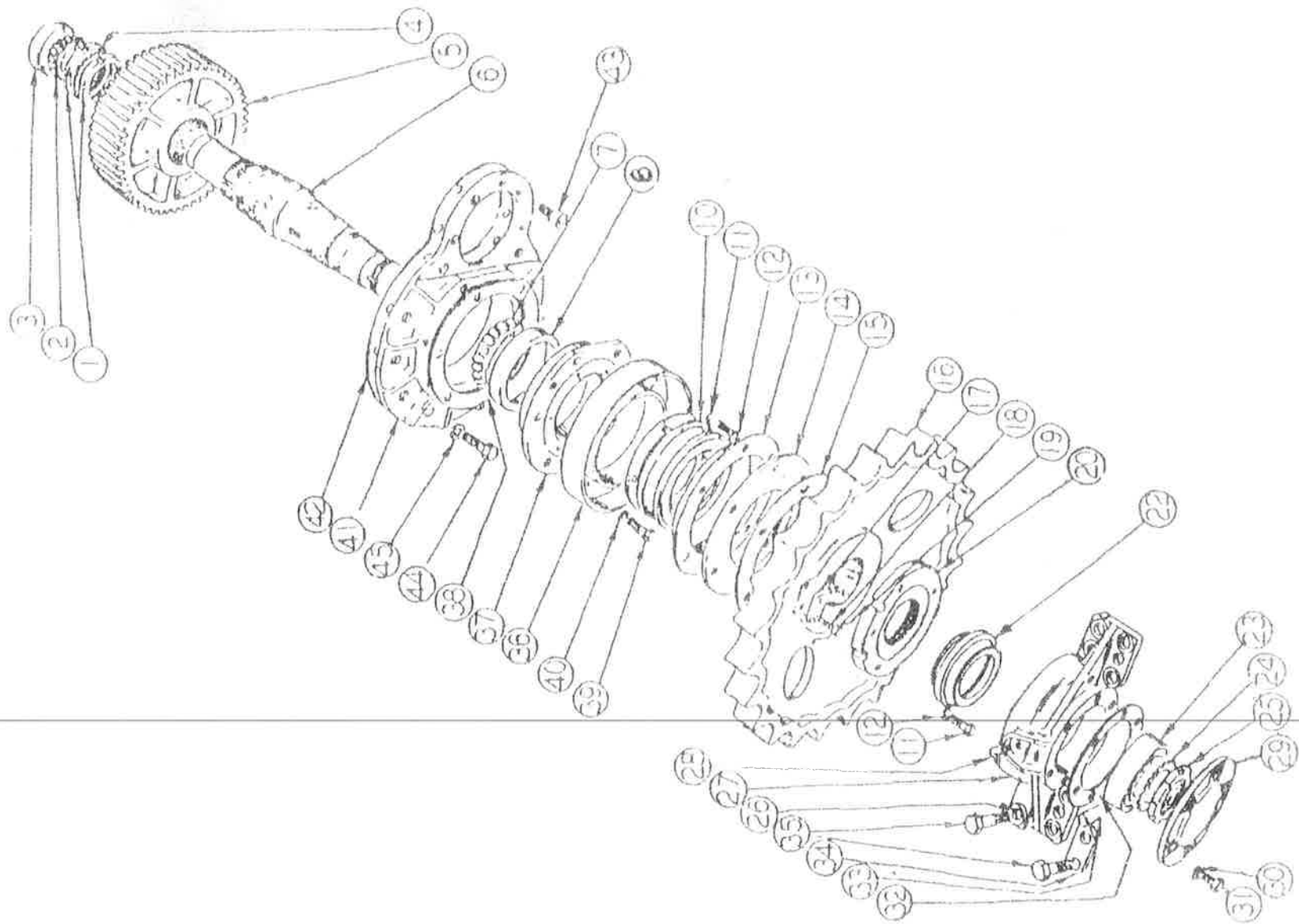


EIMCO 632 H-LOADER

Final Drive Shaft Group

OUTBOARD BEARING HOUSING DRIVE - FINAL DRIVE GRP - (630-7394)

Item no:	Part no:	Max Qty:	Description:
26	LLA20	2	Lock Plate
27	630-7379	1	Housing
28	P1FGB	1	Grease Fitting
29	630-101	1	Cap
30	W8GF	6	Lock Washer
31	8GG20	6	Cap Screw
32	SGB40A	1	Gasket
33	K67	2	Dowel
34	LLA6	2	Lock Plate
35	T10GG28	8	Cap Screw



EIMCO 632 H LOADER

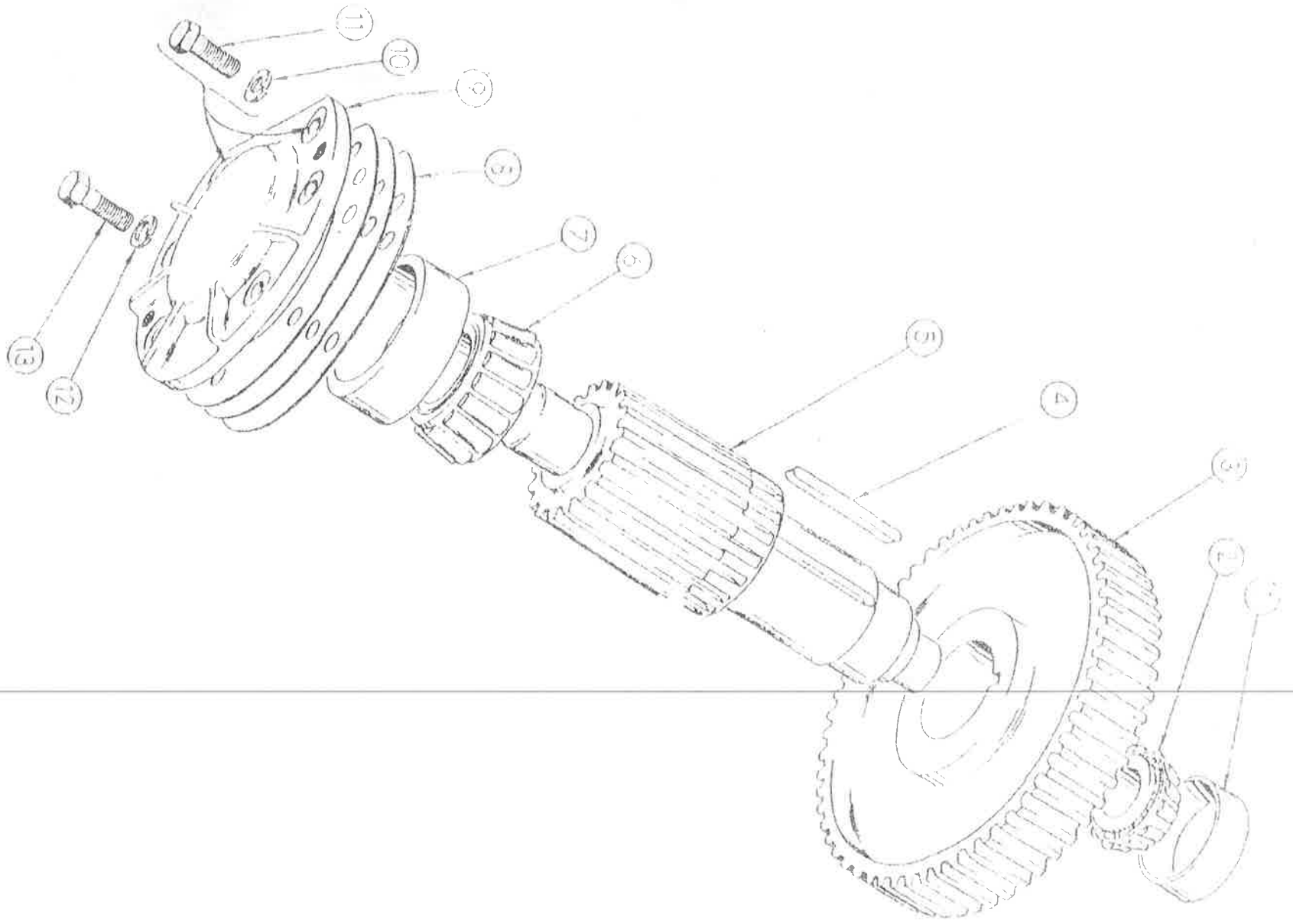
Final Drive Shaft Group

BEARING CARTRIDGE GROUP, FINAL DRIVE - (630-445)

Item no:	Part no:	Max Qty:	Description:
36	630-216	1	Guard Inboard Seal
37	630-197	1	Cartridge Bearing
38	G1232	1	Shim Set
39	T10GG28	6	Cap Screw
40	W10GF	6	Lock Washer

COVER PLATE GROUP, FINAL DRIVE (630-446)

Item no:	Part no:	Max Qty:	Description:
41	630-198	1	Cover Plate
42	630-205	1	Gasket
43	T6GH12	1	Cap Screw
44	T10GG28	10	Cap Screw
45	W10GF	10	Lock Washer



EIMCO 632 H LOADER

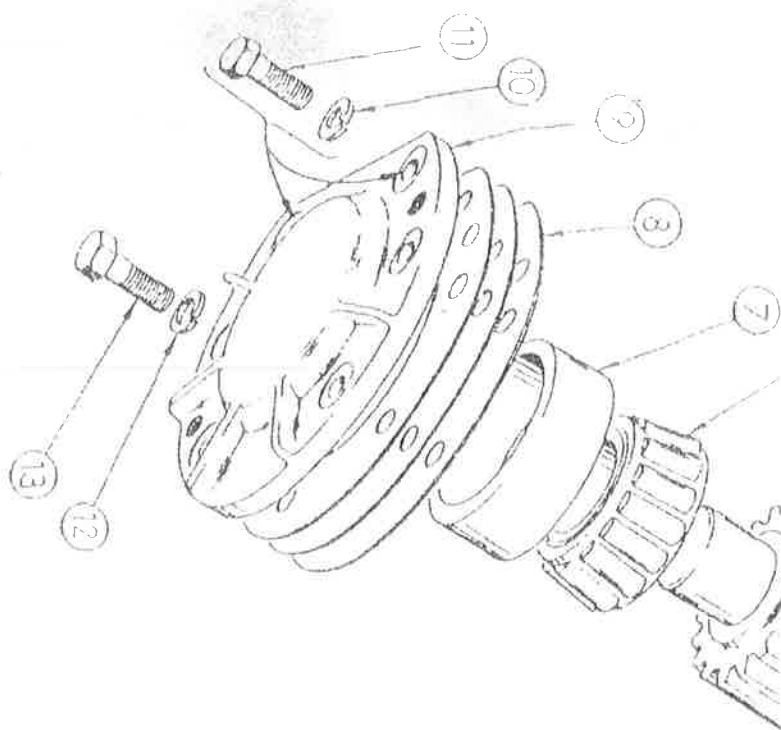
Pinion Shaft Group

PINION SHAFT GROUP, 2nd INTERMEDIATE, CRAWLER DRIVE - (630-333)

Item no:	Part no:	Max Qty:	Description:
1	G466	1	Bearing Cup
2	G463	1	Bearing Cone
3	630-144	1	Gear
4	K12R62	1	Key
5	630-173	1	Pinion Shaft
6	G523	1	Bearing Cone
7	G524	1	Bearing Cup

BEARING CARTRIDGE GROUP, 2nd INTERMEDIATE, CRAWLER DRIVE
(630-344)

Item no:	Part no:	Max Qty:	Description:
----------	----------	----------	--------------



EIMCO 632 H LOADER

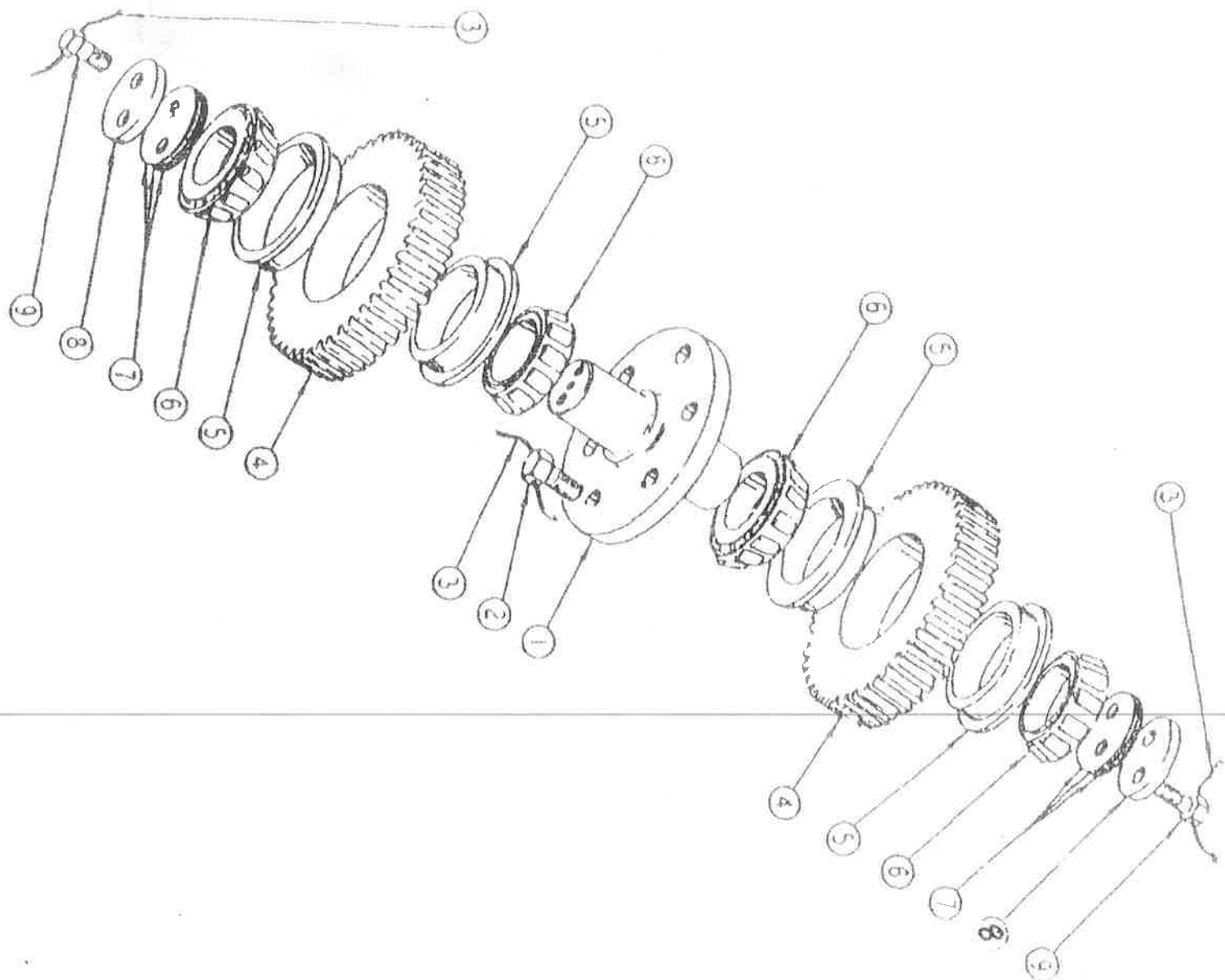
Pinion Shaft Group

PINION SHAFT GROUP, 1st INTERMEDIATE, CRAWLER DRIVE - (630-341)

Item no:	Part no:	Max Qty:	Description:
1	630-145	1	Gear
2	K8R36	1	Key
3	630-172	1	Pinion Shaft
4	G501	2	Bearing Cone
5	G502	2	Bearing Cup

BEARING CARTRIDGE GROUP, 1st INTERMEDIATE, CRAWLER DRIVE
(630-342)

Item no:	Part no:	Max Qty:	Description:
6	GA36B	1	Shim Set
7	630-188	1	Bearing Cartridge
8	W10GF	6	Lock Washer
9	10GG28	6	Cap Screw



EIMCO 632 H LOADER

Idler Shaft Group, Crawler Drive

IDLER SHAFT GROUP. CRAWLER DRIVE - (630-340)

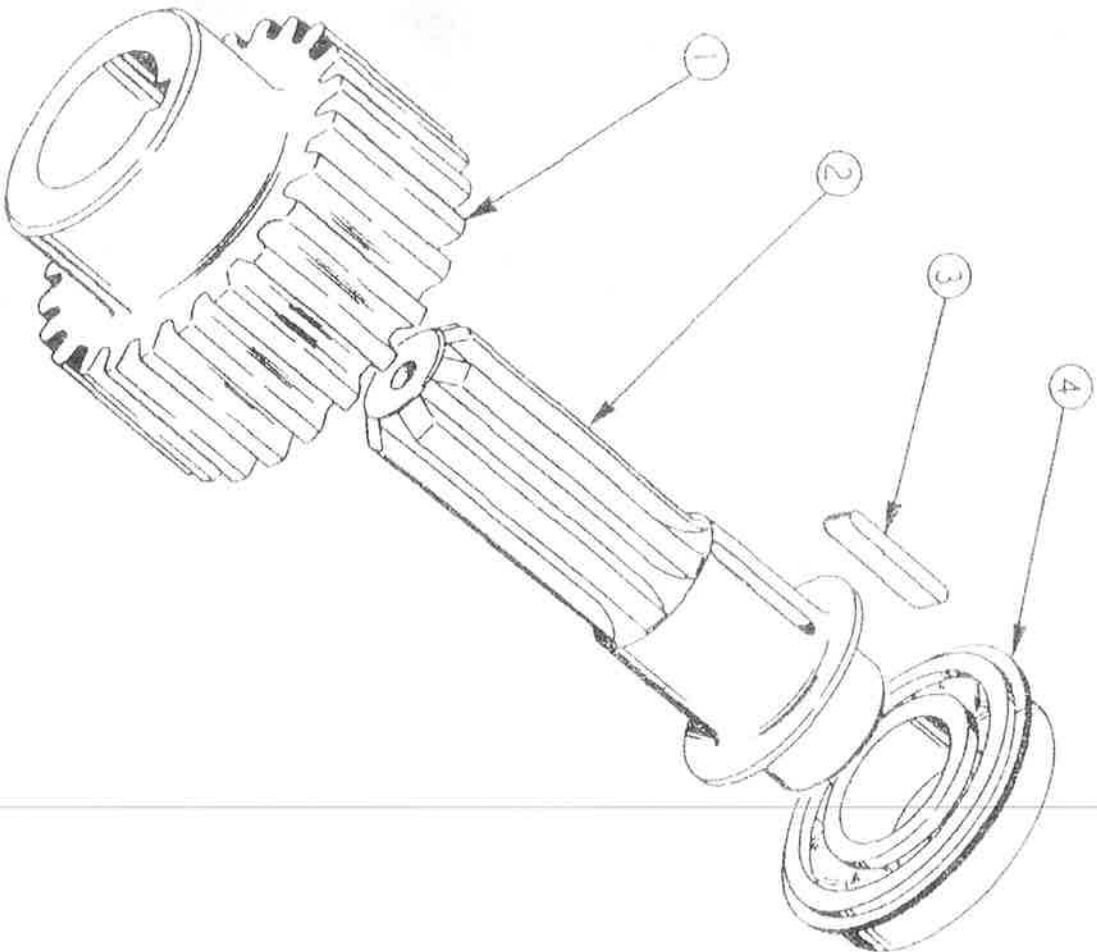
Item no:	Part no:	Max Qty:	Description:
1	630-157	1	Idler Shaft
2	8GGW16	6	Cap Screw
3	L400	3	Lock Wire
4	630-146	2	Idler Gear
5	G526	4	Bearing Cup
6	G525	4	Bearing Cone
7	GA12AX	2	Shim Set
8	LKA12A	2	Bearing for Retaining Plate
9	6GGW14	4	Cap Screw

EMCO 632 H LOADER

Motor Pinion Group, Crawler Drive

MOTOR PINION GROUP. CRAWLER DRIVE - (630-338)

Item no:	Part no:	Max Qty:	Description:
1	630-149	1	Pinion
2	630-151	1	Shaft
3	K5R19	1	Key
4	G252	1	Bearing

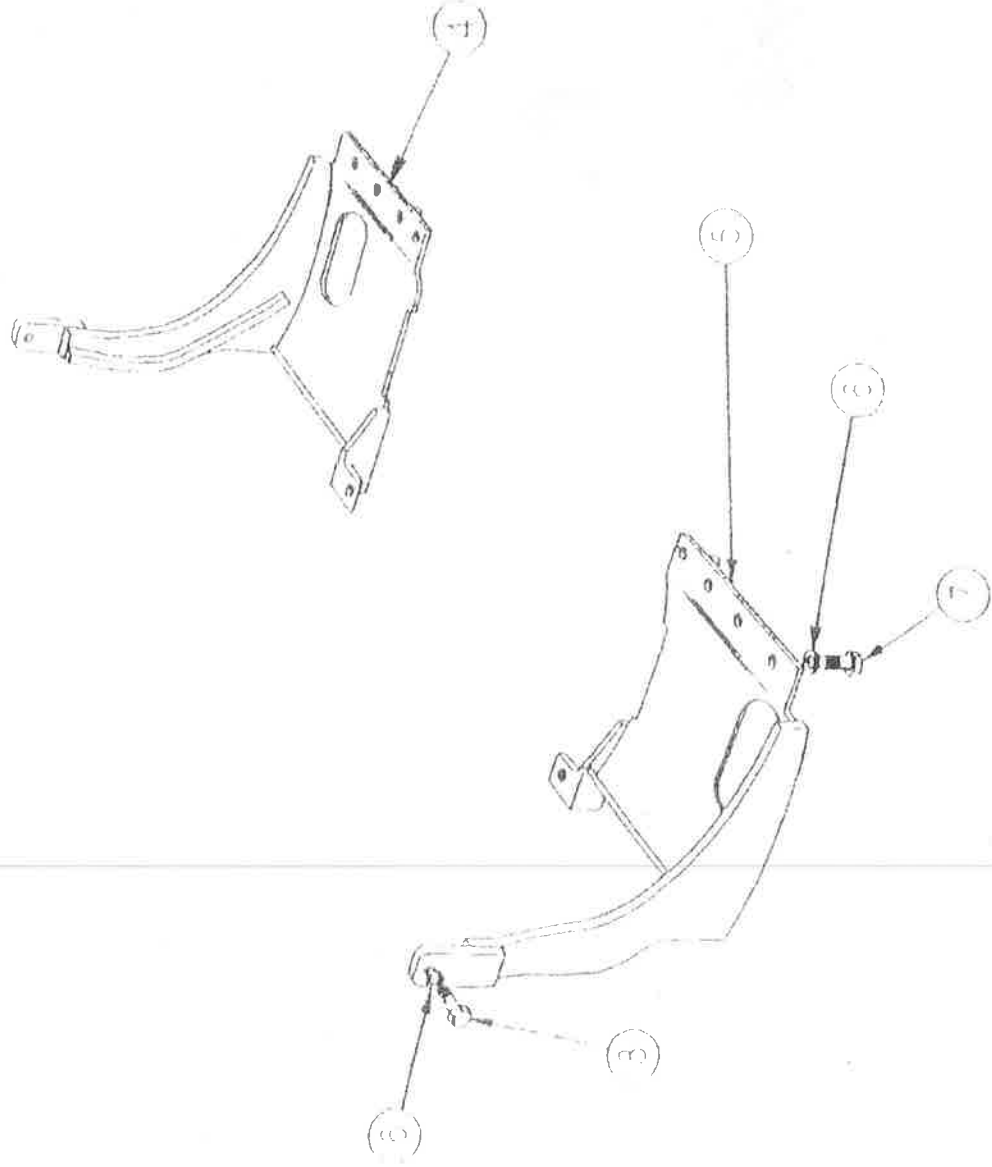


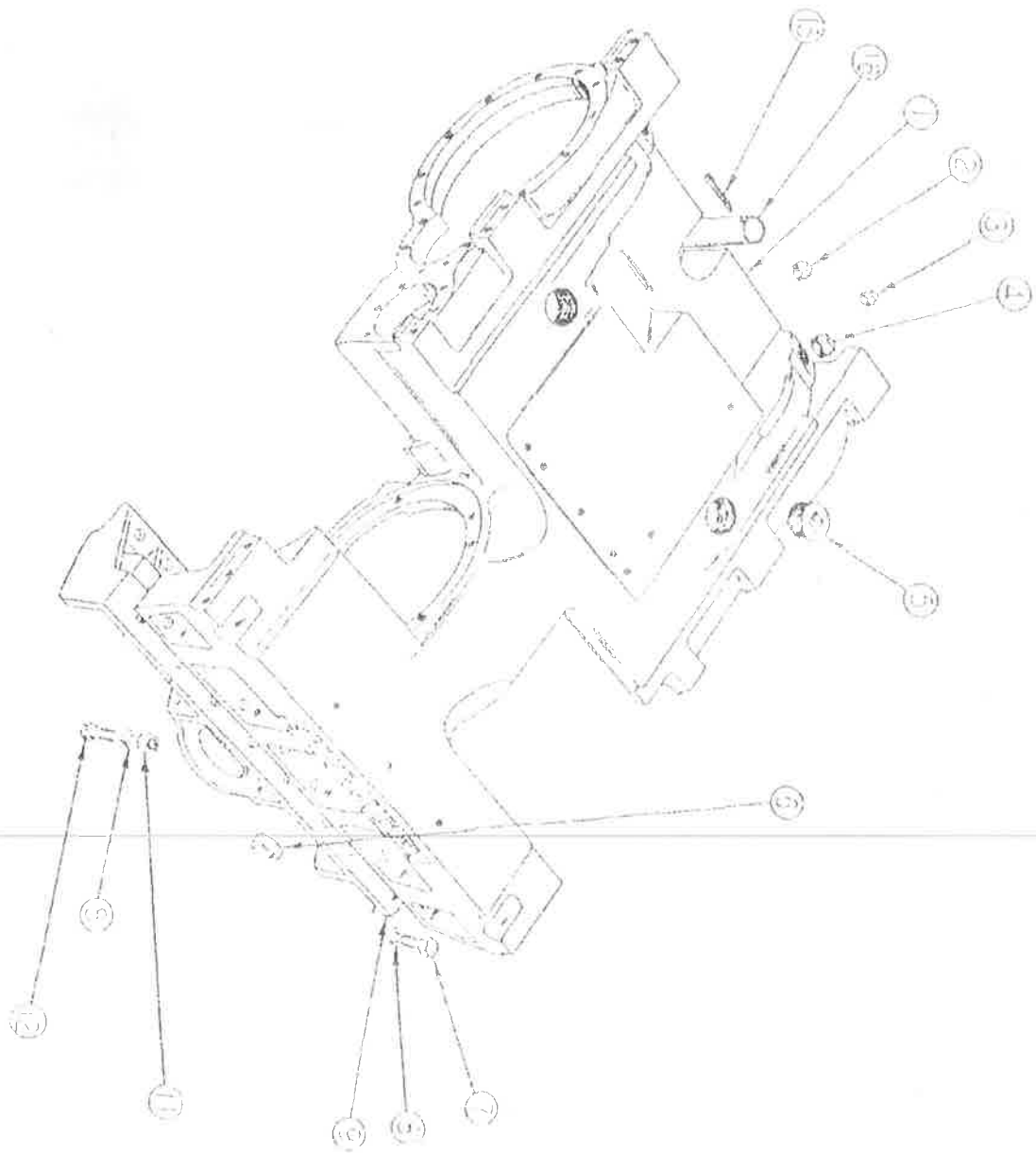
EIMCO 632 H LOADER

Motor Guard Group

MOTOR GUARD GROUP

Item no:	Part no:	Max Qty:	Description:
1	630-949	1	Motor Guard Ass, L.H
2	630-950	1	Motor Guard Ass, R.H
3	W10GF	12	Lock Washer
4	10GG20	10	Cap Screw
5	10GG24	2	Cap Screw



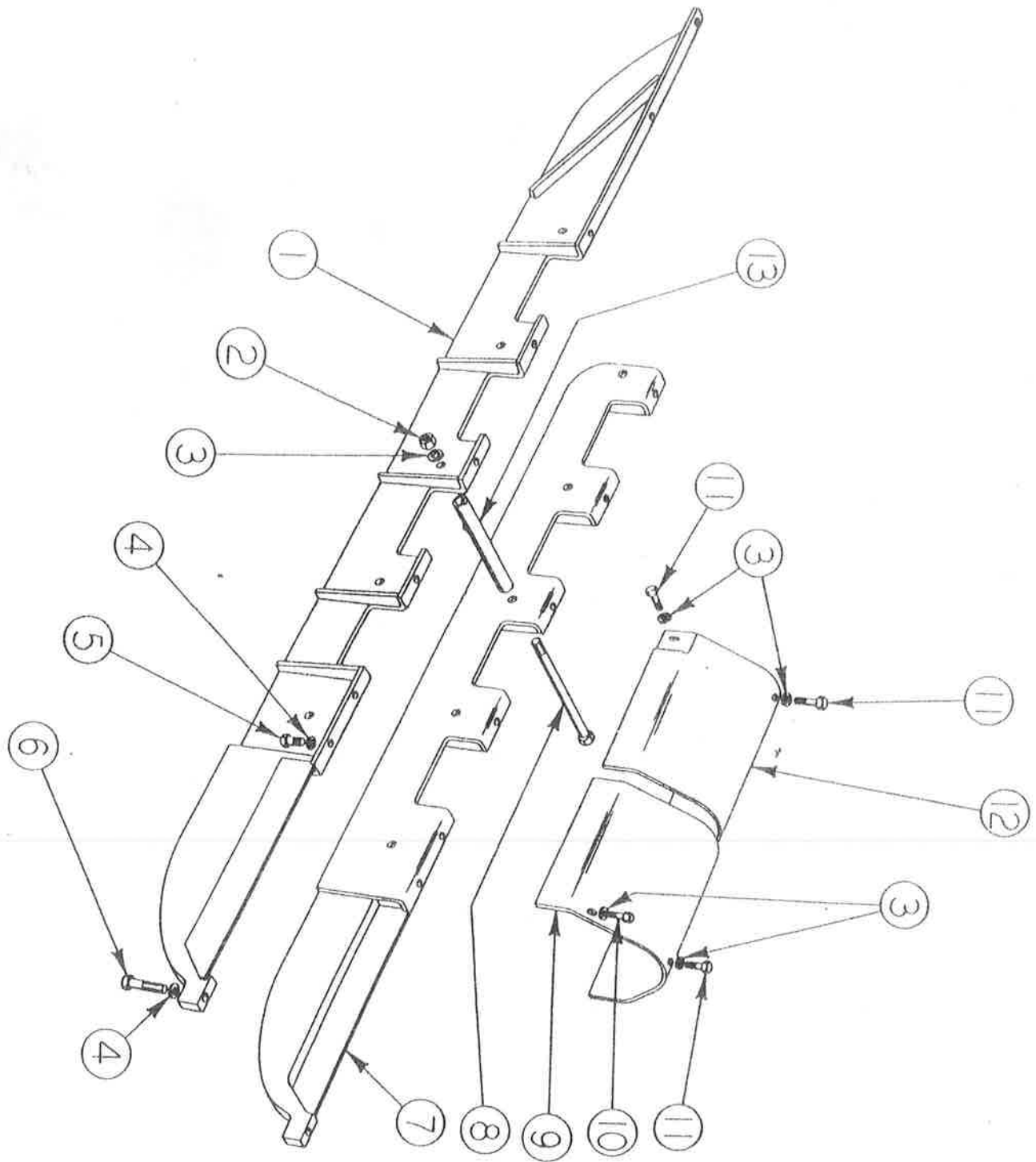


EIMCO 632 HLOADER

Crawler Drive Housing Group

CRAWLER DRIVE HOUSING GROUP - (630-6573)

Item no:	Part no:	Max Qty:	Description:
1	630-6573	1	Crawler Drive Housing Grp (incl. items 2 to 7)
2	P6BPA	2	Drain Plug
3	P4BP	2	Oil Level Plug
4	P8BP	2	Filler Plug
5	P9APA	2	Pipe Plug
6	P9FK	1	Coupling
7	P9MNS2	1	Nipple
8	T10GG28	2	Cap Screw
9	W10GF	12	Lock Washer
10	630-6007	1	Equalizer Guard Assembly
11	W8GF	2	Lock Washer
12	T8GG16	2	Cap Screw
13	630-6070	1	Cover Plate
14	T10GG	10	Nut
15	T10GG32	10	Cap Screw
16	L170	1	Cotter Pin
17	6360-457	1	Drawbar Pin



EIMCO 632 H LOADER

Dirt Guard Group

DIRT GUARD GROUP, RIGHT HAND - (630-3632)

Item no:	Part no:	Max Qty:	Description:
1	630-3264	1	Dirt Guard, R.H
2	8GH	5	Nut
3	W8GF	9	Lock Washer
4	W7GF	16	Lock Washer
5	7GG16	14	Cap Screw
6	7GG32	2	Cap Screw
7	630-3266	1	Dirt Guard, Inner, R.H
8	8GW136	5	Bolt
9	630-252	1	Guard, Front, R.H
10	8GG12	1	Cap Screw
11	8GG16	3	Cap Screw
12	630-254	1	Guard, Recoil Spring, Center, R.H
13	630-17	5	Lower Guard Spacer

DIRT GUARD GROUP, LEFT HAND - (630-3631)

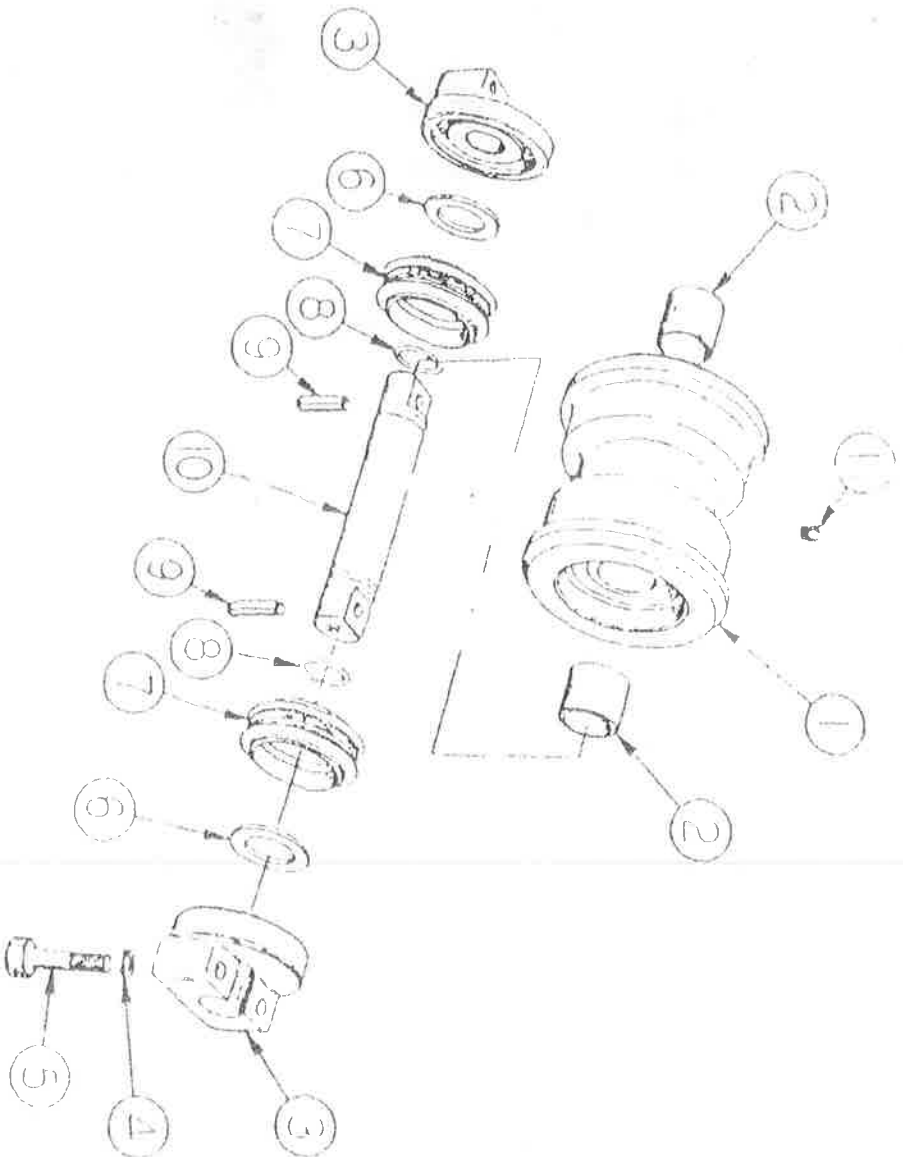
Item no:	Part no:	Max Qty:	Description:
1	630-3263	1	Dirt Guard, L.H
2	8GH	5	Nut
3	W8GF	9	Lock Washer
4	W7GF	16	Lock Washer
5	7GG16	14	Cap Screw
6	7GG32	2	Cap Screw
7	630-3265	1	Dirt Guard, Inner, L.H
8	8GW136	5	Bolt
9	630-251	1	Guard, Front, L.H
10	8GG12	1	Cap Screw
11	8GG16	3	Cap Screw
12	630-253	1	Guard, Recoil Spring, Center, L.H
13	630-17	5	Lower Guard Spacer

EMCO 632 HLOADER

Track Roller Group

TRACK ROLLER GROUP - (630-6191)

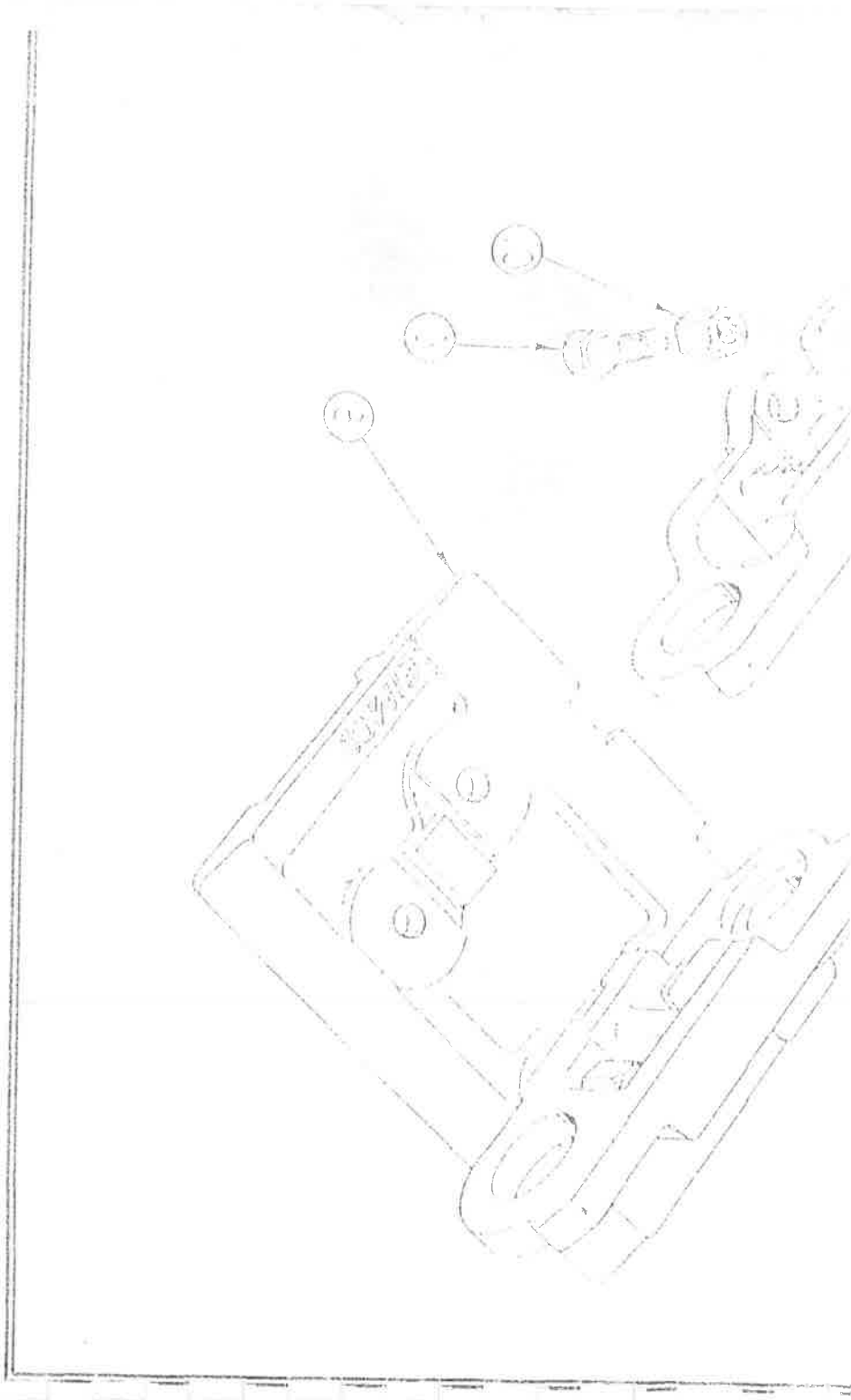
Item no:	Part no:	Max Qty:	Description:
1	630-6201	1	Track Roller Ass (incl. item 2)
2	630-6175	2	Bushing
3	630-6177	2	Collar
4	W10GF	4	Lock Washer
5	T10GG48	4	Cap Screw
6	630-6184	2	Trust Washer
7	S2664	2	Seal Ass. (incl. S2671 "O" Ring)
8	S2724	2	"O" Ring
9	K2078	2	Roll Pin
10	630-6185	1	Shaft
11	P2FFPA	2	Pipe Plug



EIMCO 632 H LOADER

Heavy Duty Track Table

Track Arrangement	Track Shoe Set	Description:	Flat Shoe Part No:	No Req	Grouser Shoe Part No	No Req
630-6827	630-6826	All Flat Track Shoes	630-6552	56		
630-6829	630-6828	All Crouser Track Shoes			630-6553	56
630-6831	630-6830	1 Crouser Track in 2 Shoes	630-6552	28	630-6553	28
630-6833	630-6832	1 Crouser Track in 4 Shoes	630-6552	42	630-6553	14



EIMCO 632 H LOADER

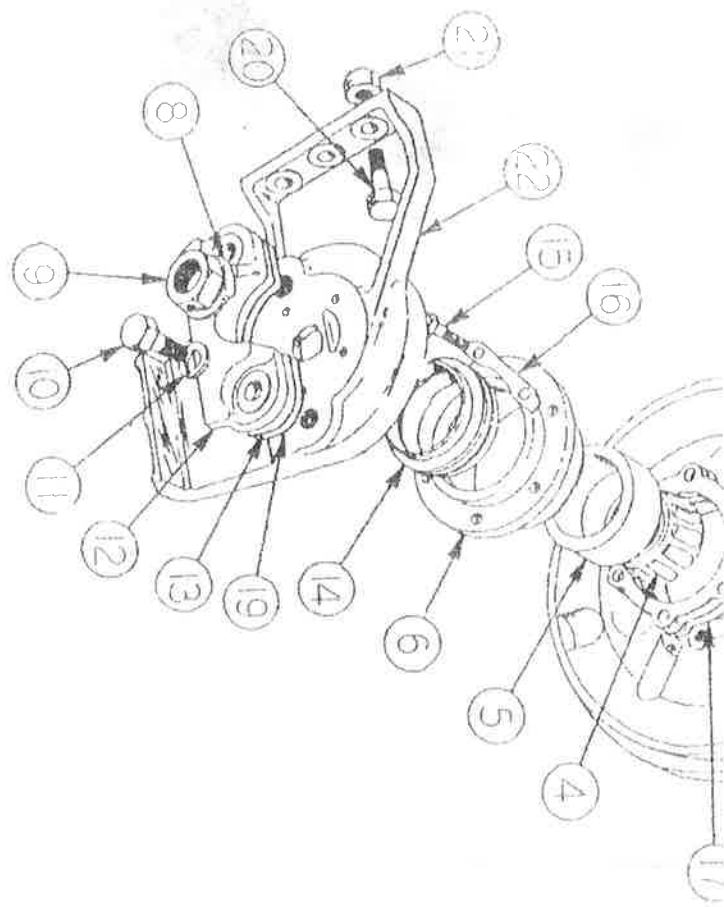
Heavy Duty Track Arrangement

TRACK LINK GROUP - (630-6448)

Item no:	Part no:	Max Qty:	Description:
1	630-6795	1	Master Pin
2	630-6792	1	Master Bushing
3	630-6793	2	Spacer, Master Bushing
4	630-6794	27	Track Pin
5	630-6789	28	Track Link, L.H
6	630-6791	27	Track Pin
7	630-6790	28	Track Link, R.H

TRACK SHOE SET

Item no:	Part no:	Max Qty:	Description:
8	See Table		Flat Track Shoe (Heavy Duty 9")
9	TA-6000	224	Case Screws



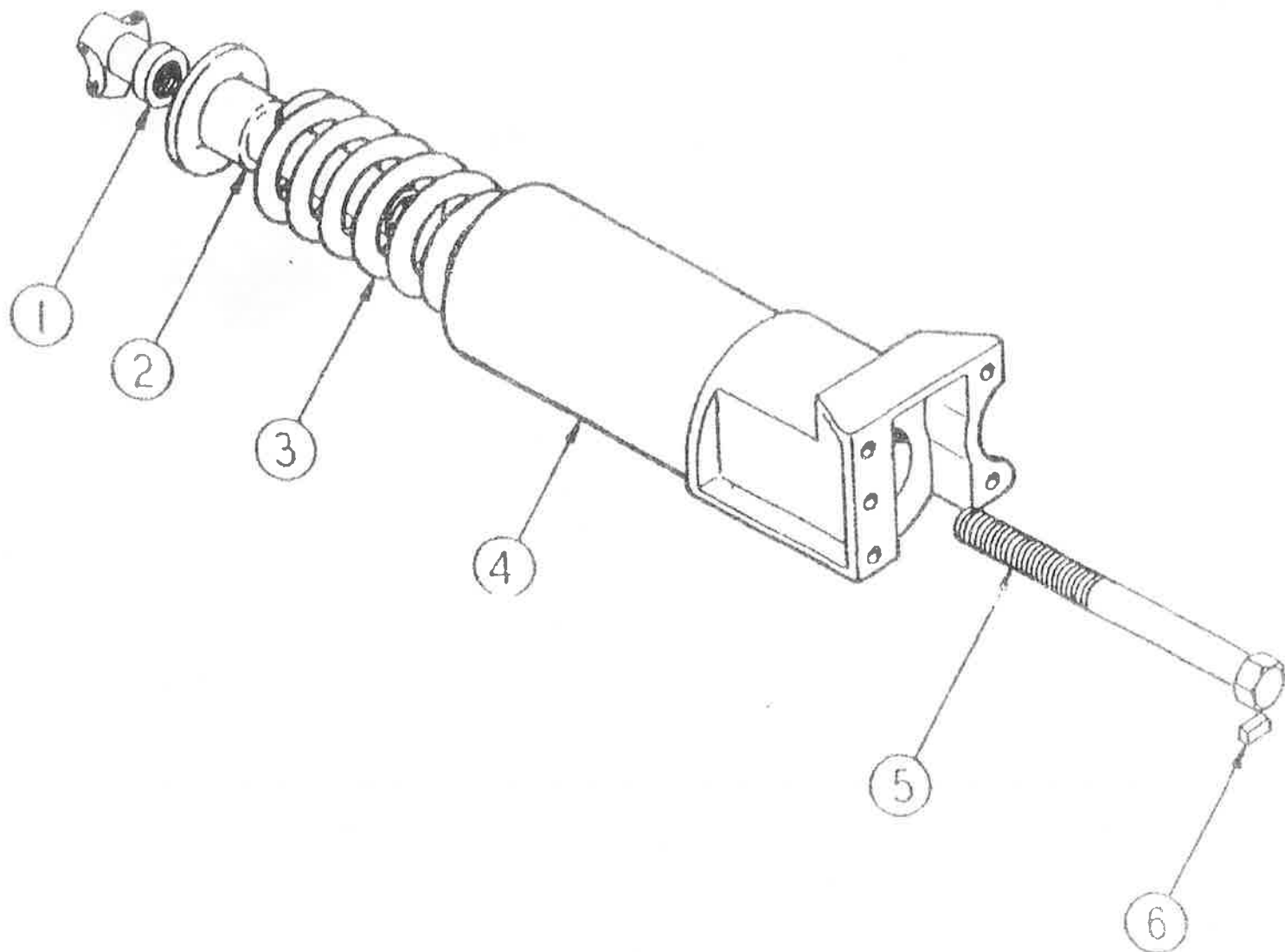
EIMCO 632 H LOADER

Front Idler Group

FRONT IDLER GROUP, LEFT HAND - (630-6211)

FRONT IDLER GROUP, RIGHT HAND - (630-6212)

Item no:	Part no:	Max Qty:	Description:
1	630-6220	1	Front Idler Ass
2	P2FPC	2	Pipe Plug
3	630-6218	1	Shaft, Front Idler
4	G443	2	Bearing Cone
5	G438	2	Bearing Cup
6	630-6205	2	Bearing Cage
7	630-6208	1	Collar Inside, R.H
7	630-6209	1	Collar Inside, L.H
8	LLA4	2	Lock Washer
9	20HS	2	Jam Nut
10	T12GG24	4	Cap Screw
11	W12GF	4	Lock Washer
12	630-5884	2	Guide Plate
13	630-174	2	Shim (.065 thick)
14	SM2691	2	Seal Assembly (incl. S2692 O-Ring)
15	T8GG20	12	Cap Screw
16	LLA23	6	Lock Bolt
17	G1222	2	Shim Set
18	S2801	2	O - Ring
19	630-116	1	Shim (.032 thick)
20	T10GG32	5	Cap Screw
21	L210	5	Self Locking Nut
22	630-6206	1	Collar Outside. R.H.
22	630-6207	1	Collar Outside. L.H.



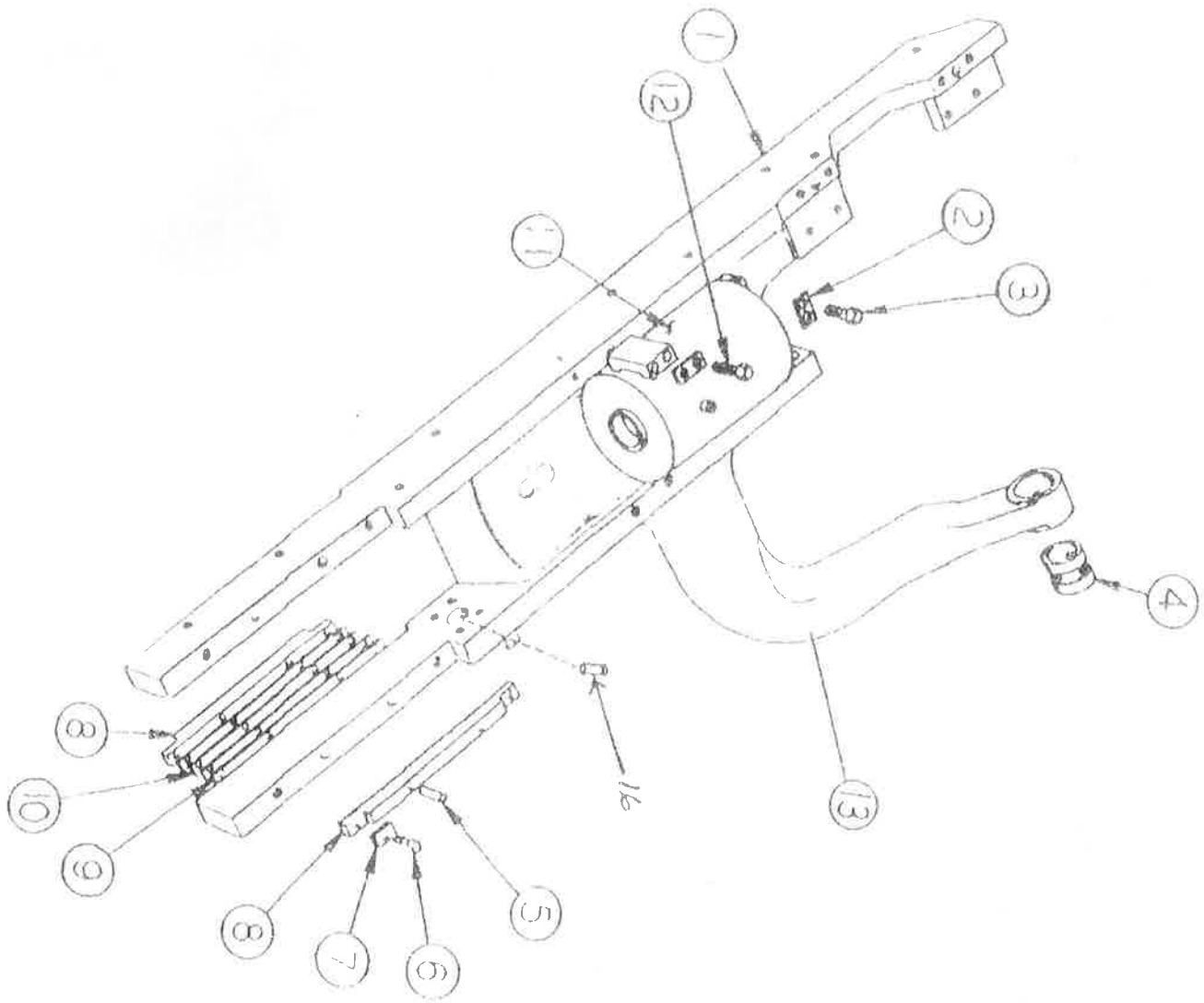
EIMCO 632 H LOADER

Track Recoil Group

TRACK RECOIL GROUP RIGHT HAND - (630-5980)

TRACK RECOIL GROUP LEFT HAND - (630-5975)

Item no:	Part no:	Max Qty:	Description:
1	630-125	1	Recoil Bolt
2	630-5982	1	Yoke Assembly, R.H.
2	630-5981	1	Yoke Assembly, L.H.
3	630-327	1	Spacer
4	ZA39	1	Recoil Spring
5	630-124	1	Retainer
6	L151	1	Cotter Pin
7	630-123	1	Adjusting Nut
8	T22GK	1	Nut

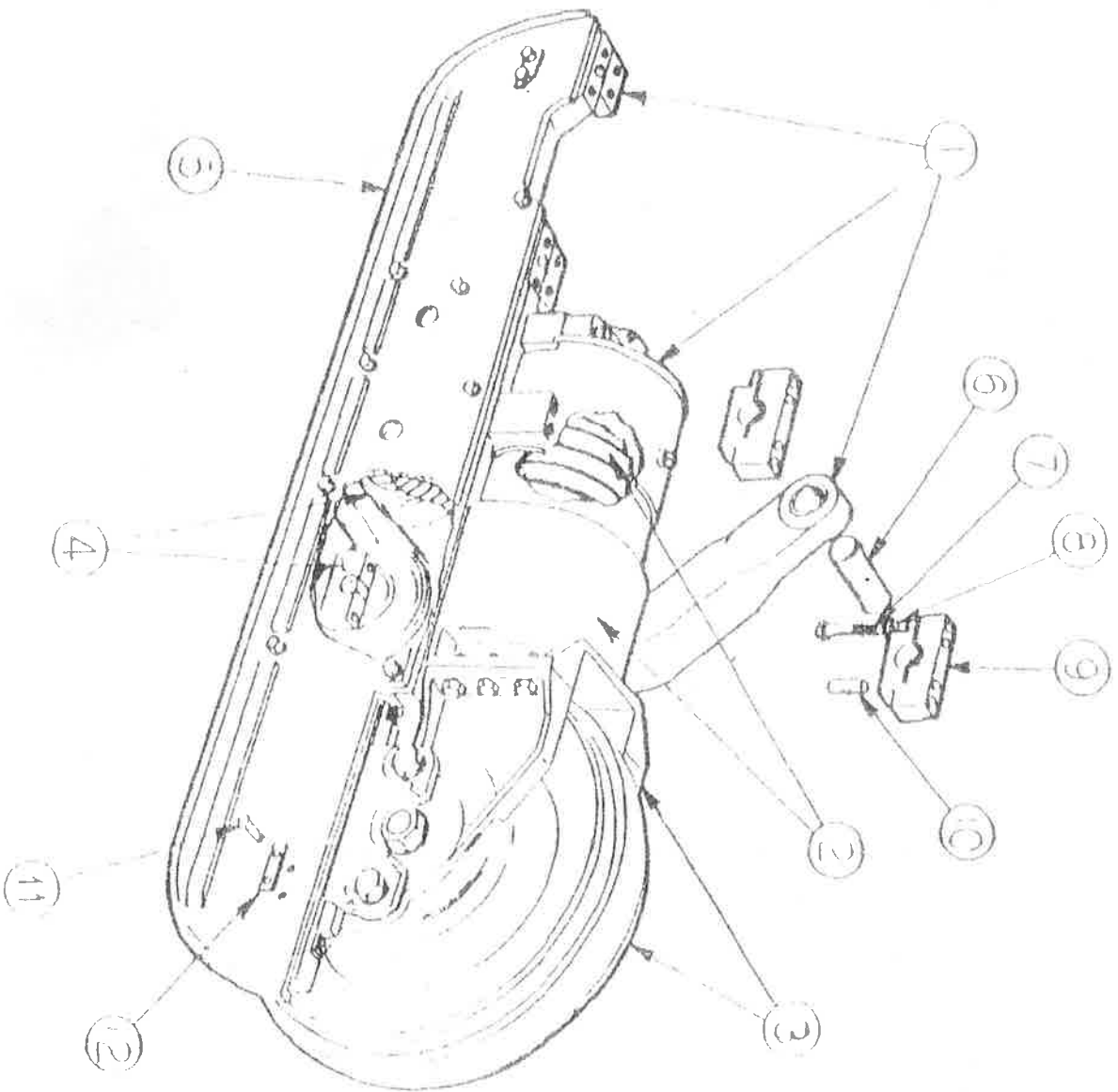


EIMCO 632 H LOADER

Track Frame Group

TRACK FRAME GROUP, NON - OSCILLATING

Item no:	Part no:	Max Qty:	Description:
1	630-6016	1	Track Frame Grp.R.H. (incl. items 2 to 16)
2	630-6015	1	Track Frame Grp. L.H. (incl. items 2 to 16)
2	LLA20	6	Lock Strip
3	T10GG40	4	Cap Screw
4	630-5974	1	Cap & Guide Pipe Ass. R.H. (incl item 8)
4	630-5973	1	Cap & Guide Pipe Ass. L.H. (incl item 8)
5	T10GG80	2	Cap Screw
6	P2FG	1	Grease Fitting
7	GSA28A	1	Bushing, Diagonal Brace
8	P1FGA	1	Grease Fitting (30 degrees)
9	T10GG32	6	Cap Screw
10	630-5883	4	Guide Strip, Front Idler
11	K72	8	Dowel Pin
12	T10GG16	8	Cap Screw
13	LLA21	8	Lock Strip
14	630-5886	2	Shim (.065 thick)
15	630-5891	6	Shim (.035 thick)
16	630-5938	1	Bracket, Recoil Spring



inside dirt guard 63006460 (At customer's request)
Spacer between dirt guards 63005731 (At customer's request)

EIMCO 632 H LOADER

Crawler Arrangement (right and left hand)

CRAWLER ARRANGEMENT. R.H. (630-6226)

Item no:	Part no:	Max Qty:	Description:
1	630-6016	1	Track Frame Group, R.H.
2	630-5980	1	Recoil Group, R.H.
3	630-6212	1	Idler Assembly, R.H.
4	630-6191	4	Track Roller Assembly
5	630-5894	1	Dirt Guard Outside, R.H.
6	HRB165	1	Pin
7	T10GG64	4	Cap Screw
8	W10GF	15	Lock Washer
9	630-105	2	Anchor Block
10	K83	4	Dowel Pin
11	LLA20	3	Lock Strip
12	T10GG24	17	Cap Screw
13	630-6168	AR	Shim, Yoke to Idler Collar

CRAWLER ARRANGEMENT. L.H. (630-6227)

Item no:	Part no:	Max Qty:	Description:
1	630-6015	1	Track Frame Group, R.H.
2	630-5979	1	Recoil Group, R.H.
3	630-6211	1	Idler Assembly, R.H.
4	630-61911	4	Track Roller Assembly
5	630-5893	1	Dirt Guard Outside, R.H.
6	HRB165	1	Pin
7	T10GG64	4	Cap Screw
8	W10GF	15	Lock Washer
9	630-105	2	Anchor Block
10	K83	4	Dowel Pin
11	LLA20	3	Lock Strip
12	T10GG24	17	Cap Screw
13	630-6168	AR	Shim, Yoke to Idler Collar

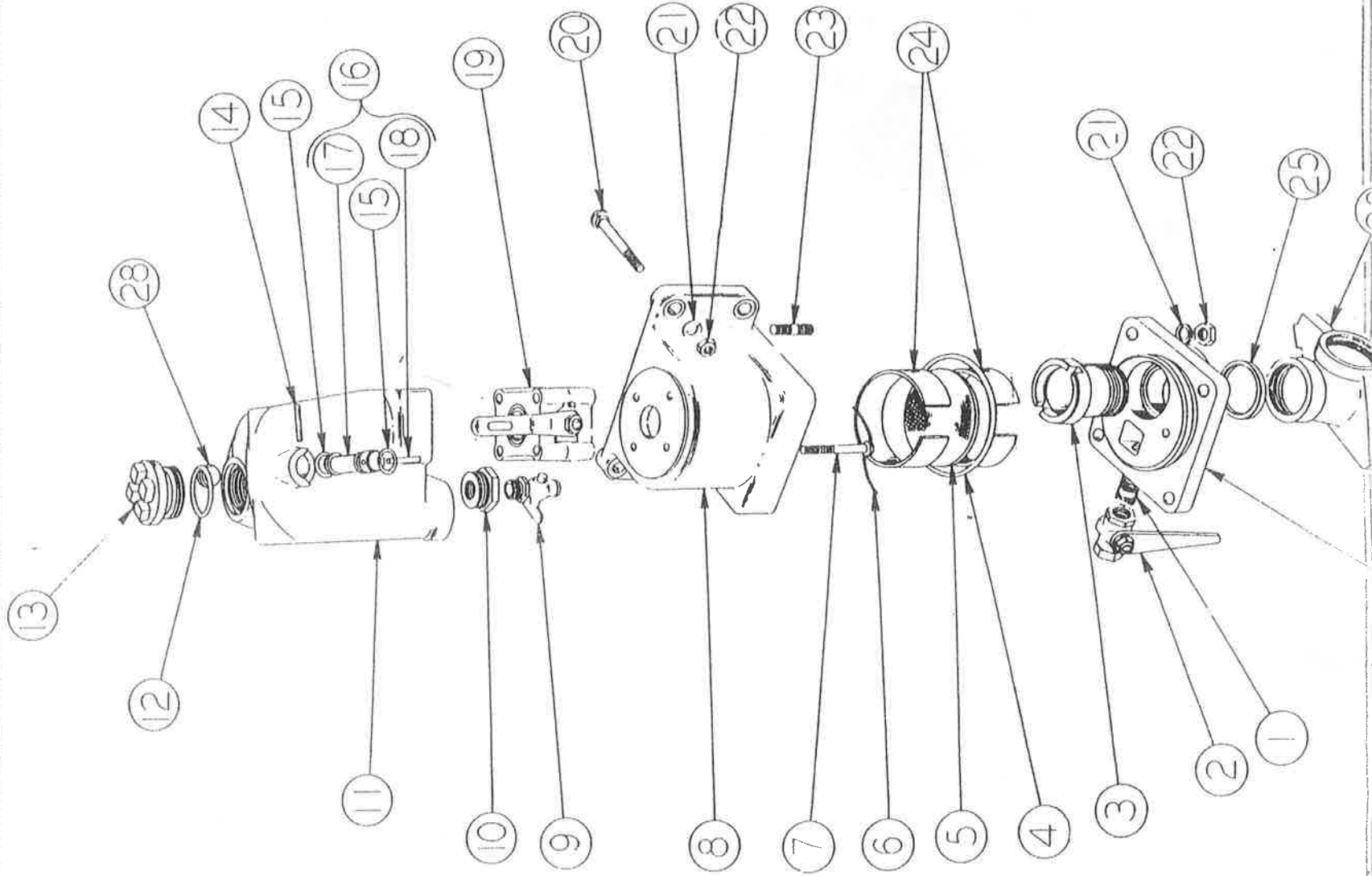
EMCO 632 H LOADER

Swivel Filter Shut Off Oiler Assembly

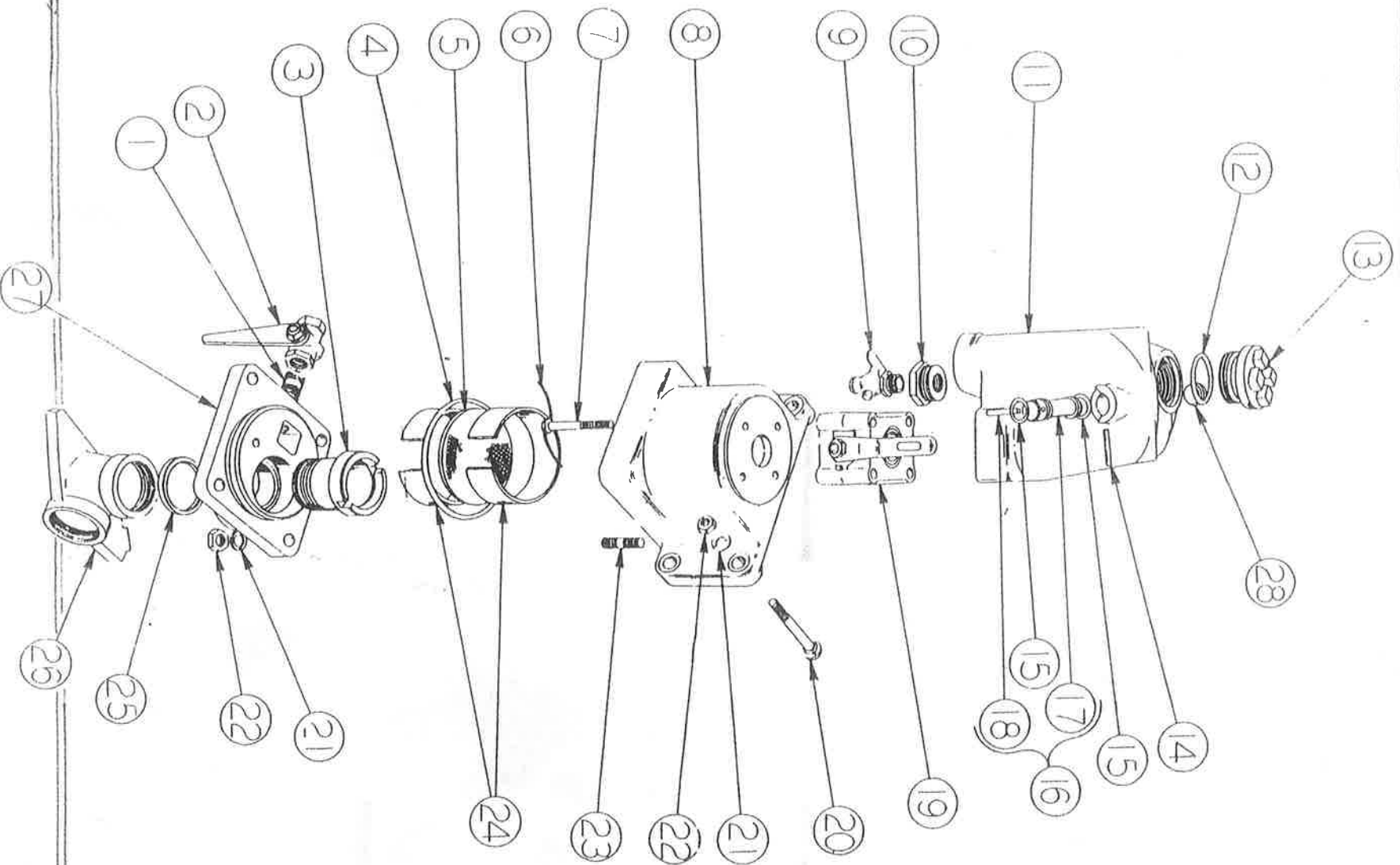
SWIVEL FILTER AND SHUT OFF OILER ASSEMBLY (25-431)

Item no:	Part no:	Max Qty:	Description:
1	P4MN24	1	Close Nipple
2	24-815	1	Blow Out Valve
3	25-64	1	Swivel Sleeve
4	S2788	1	O - Ring
5	JVB113	1	Filter Element
7	T6GGW60	4	Cap Screw
8	24-1110	1	Filter Body
9	P3RVVD	1	Petcock
10	P5RB3	1	Reducing Bushing
11	24-812	1	Oiler Body
12	S2731	2	O - Ring
13	24-805	1	Filler Plug
14	K173	1	Roll Pin
15	S2711	2	O - Ring
16	24-807	1	Metering Pin
	24-814	1	Shut Off Valve
	MIR250/087	1	Housing
	MIR250/074	2	Seals
	MIR250/090	1	Brass Ball
	MIR250/088	1	Spindle
	X50397	1	O - Ring
	MIR250/043	1	Seal Washer
	MIR250/038	1	Lever
	R3256	2	O - Ring
	MIR250/086	1	Plates
	K173	2	Sellock Pin
	250400005	2	9/16 UNF Lock Nut
20	T8GG40	4	Carriage Bolt
21	W8GF	8	Lock Washer
22	T8GG	8	Nut
23	TA2036	4	Studs
24	24-1111	1	Spacer
25	SA2690	1	Seal
26	25-65	1	Swivel Elbow

27	25-66	1	Cap
28	F4BPA	1	Pipe Plug
29	X35204	4	Pipe Plug
30	24-837	2	Screen
32	MR250/123	2	Gasket



27	25-66	1	Cap
28	P4BPA	1	Pipe Plug
29	X35204	4	Pipe Plug
30	24-837	2	Screen
32	MR250/123	2	Gasket

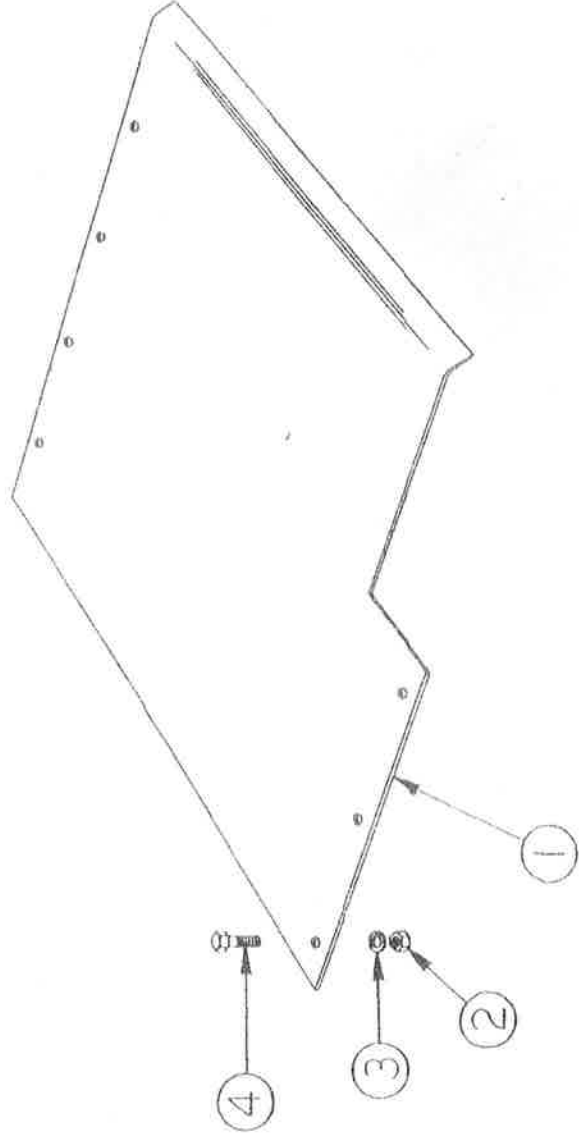


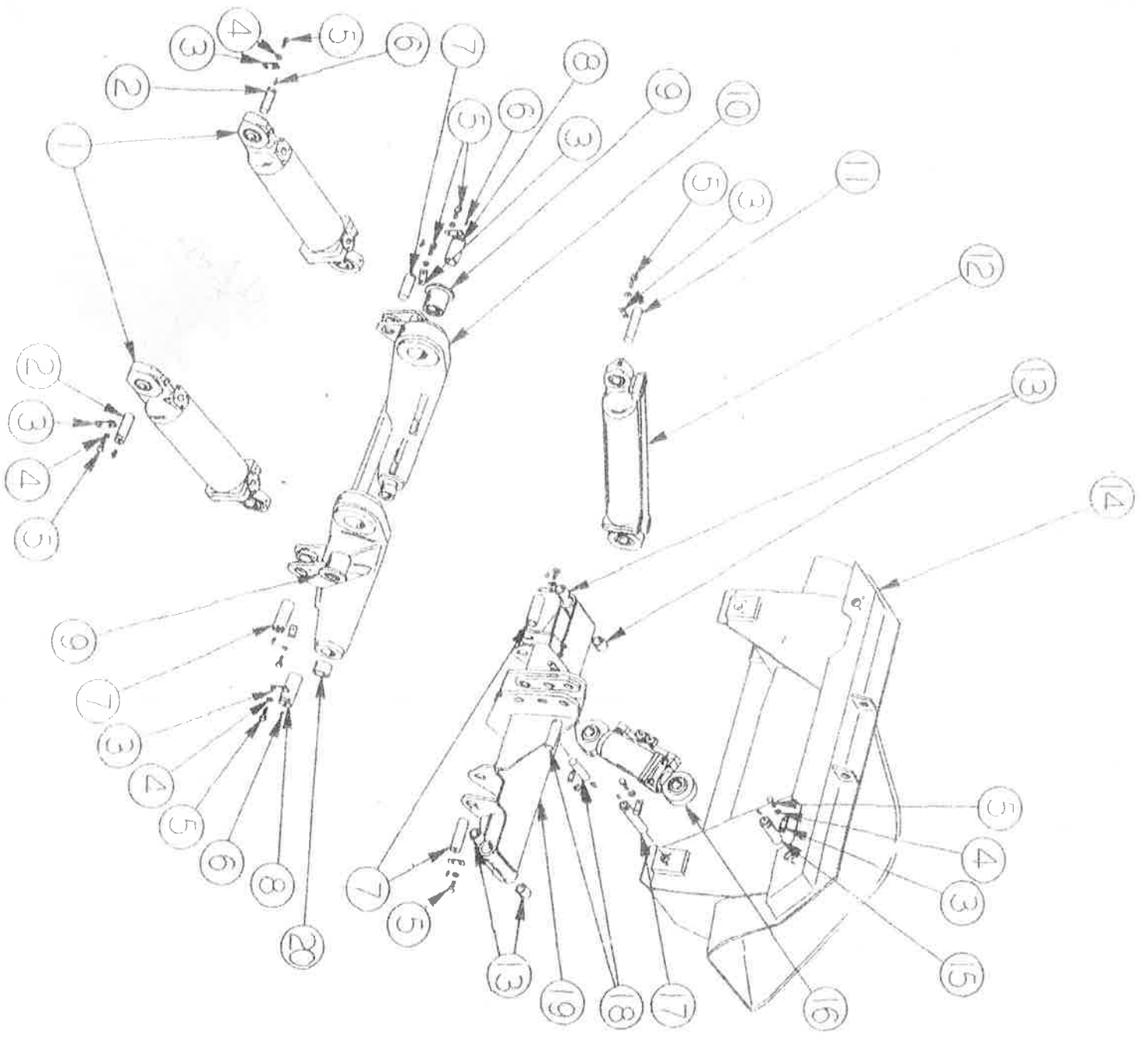
EIMCO 632 H LOADER

Cover Plate Assembly

COVER PLATE ASSEMBLY - (630-5683)

Item no:	Part no:	Max Qty:	Description:
1	630-5679	1	Cover Plate
2	14GG	7	Nut
3	W14GF	7	Lock Washer
4	14GG32	7	Cap Screw





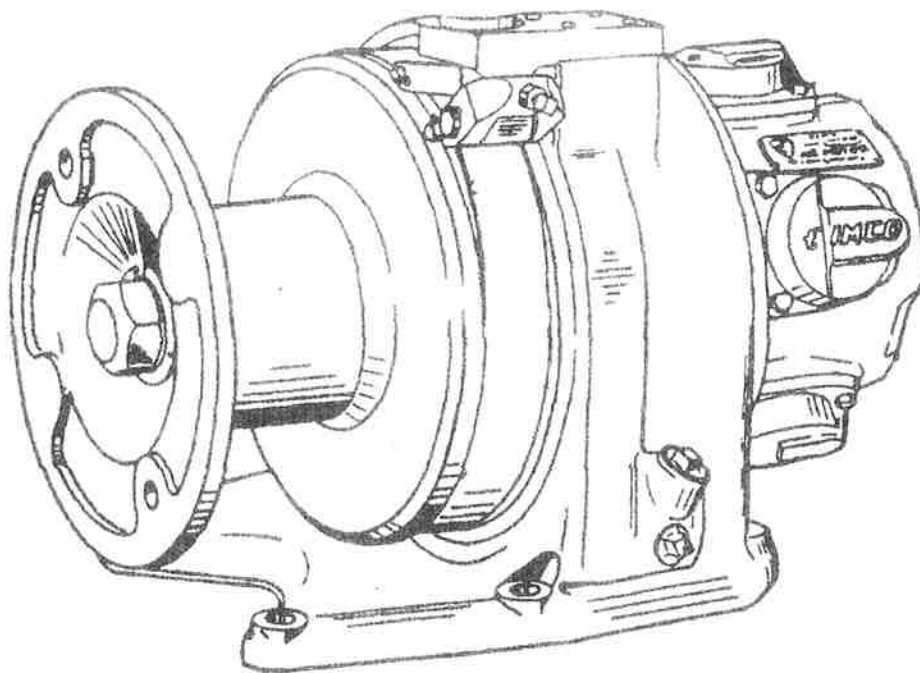
EIMCO 632 H LOADER

Attachment Arrangement

ATTACHMENT ARRANGEMENT - (630-5339)

Item no:	Part no:	Max Qty:	Description:
1	VRM162	2	Cylinder Group, Lift
2	HRA200	2	Pin
3	103-4399	13	Keeper Plate
4	W8GF	26	Lock Washer
5	8GG16	26	Cap Screw
6	P1FG	13	Grease Fitting
7	HRA190	4	Pin
8	HRB191	2	Pin
9	GGB44A	2	Bushing
10	630-5322	1	Main Lift Arm Assembly (incl. items 9 to 20)
11	HRB197	1	Pin
12	VRM458	1	Cylinder Group, Roll
13	GSA32K	4	Bushing
14	630-5318	1	Bucket
15	HRB199	1	Pin
16	VRM160	1	Cylinder Group, Drum
17	HRB192	1	Pin
18	HRA201	2	Pin
19	630-5320	1	Bucket Frame Assembly
20	GSA32L	4	Bushing

EIMCO 632 H TUGER HOIST

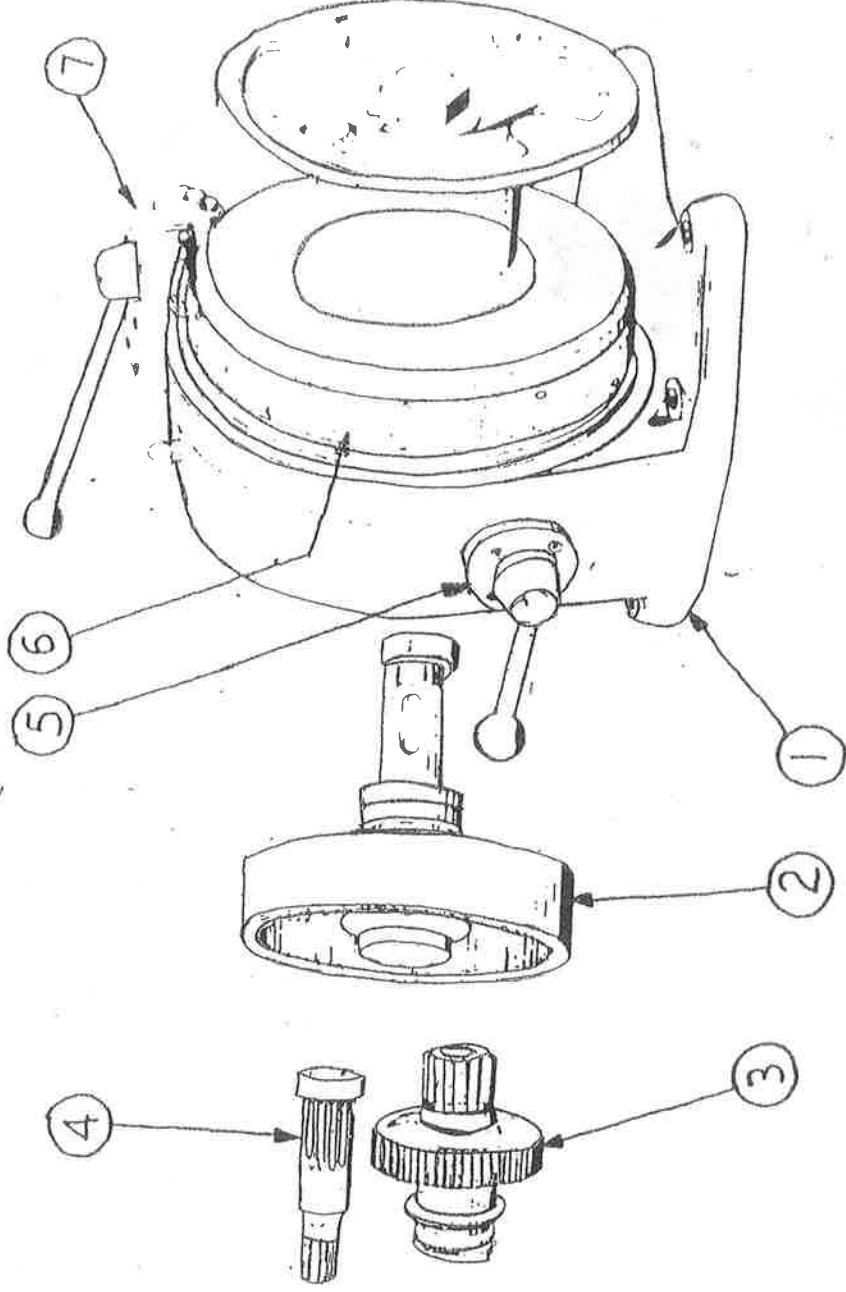


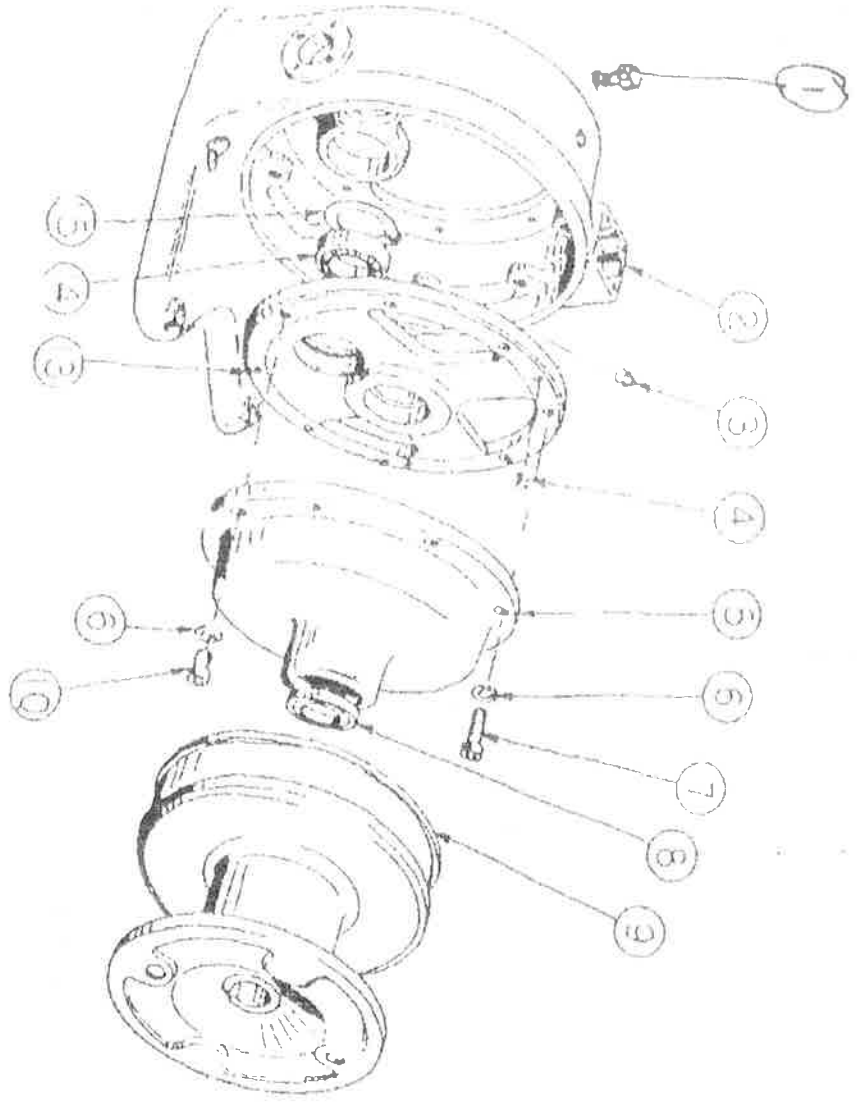
EIMCO 632 H LOADER

Winch Gearbox Group

WINCH GEARBOX GROUP - (211-5285)

Item no:	Part no:	Max Qty:	Description:
1	211-5297	1	Winch Housing & Drum Group
2	211-5293	1	Reducer Shaft Group
3	211-5291	1	Transmission Gear Group
4	211-5290	1	Motor Pinion Group
5	211-5294	1	Eccentric Coupling Group
6	211-5295	1	Brake Band Group
7	211-5296	1	Brake Group





EIMCO 632 H LOADER

Drum & Winch Housing Group

DRUM AND WINCH HOUSING GROUP - (211-5297)

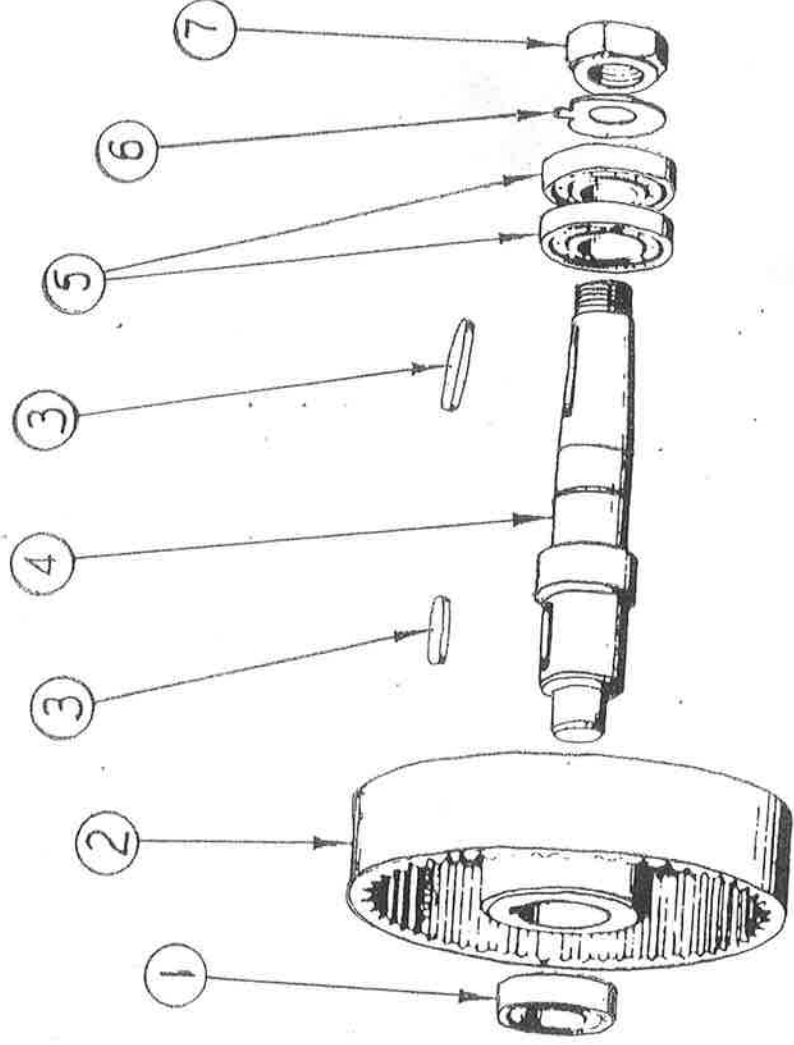
Item no:	Part no:	Max Qty:	Description:
1	210-5156	1	Lifting Eye
2	211-5336	1	Reducer Box
3	P4BP	2	Pipe Plug
4	210-6027	1	Dowel
5	211-5334	1	Reducer Gear Cover
6	210-6021	8	Washer
7	8GH32	7	Cap Screw
8	SM6250	1	Seal
9	211-5335	1	Drum
10	8GH20	1	Cap Screw
11	211-5298	1	Disc Support Ass. (incl. items 4, 12 and then 15)
12	211-5316	1	Gasket
13	211-5333	1	Disc Support
14	GM8502	1	Bearing
15	LM1301	1	Snap Ring

EIMCO 632 H LOADER

Reducer Shaft Group

REDUCER SHAFT GROUP - (211-5293)

Item no:	Part no:	Max Qty:	Description:
1	G153	1	Bearing
2	211-5324	1	Gear
3	J92N	2	Key
4	211-5329	1	Shaft
5	GM6003	2	Bearing
6	21-5054	1	Lock Washer
7	21-5053	1	Nut

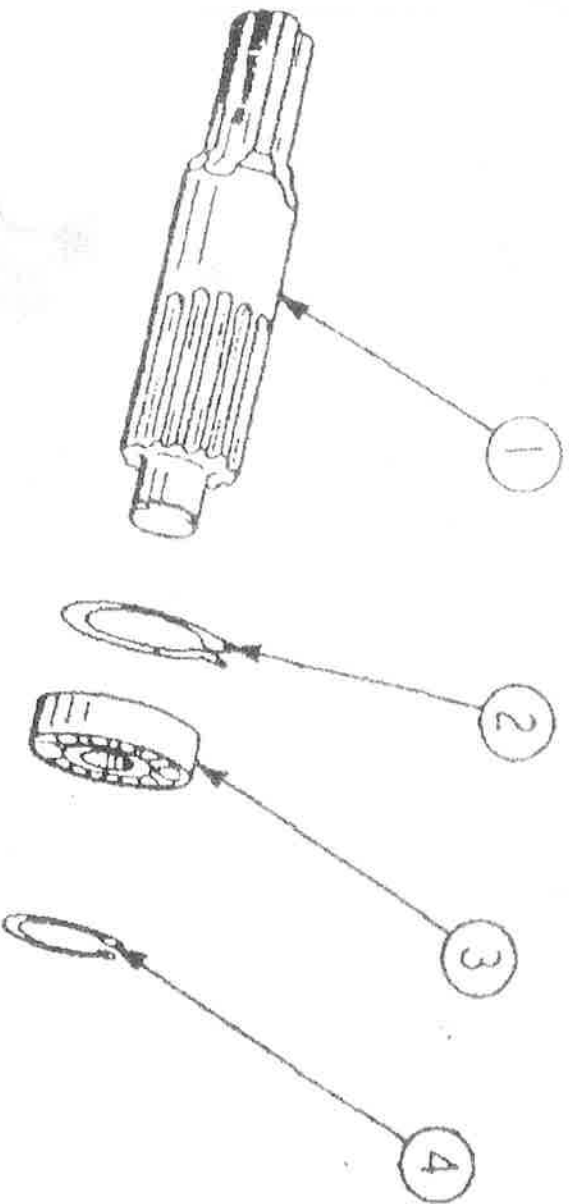


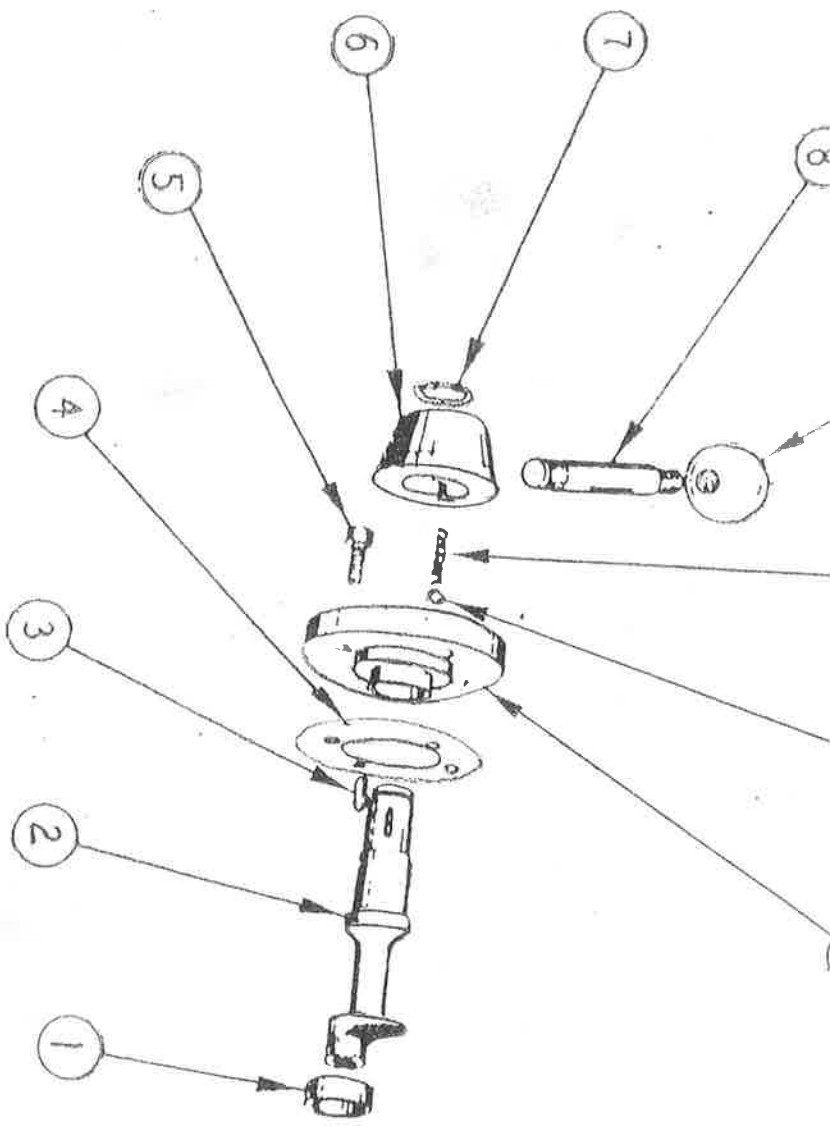
EIMCO 632 H LOADER

Motor Pinion Group

MOTOR PINION GROUP - (211-5290)

Item no:	Part no:	Max Qty:	Description:
1	211-5323	1	Central Pinion
2	LM0801	1	Snap Ring
3	G117	1	Bearing
4	LM0400	1	Snap Ring
5	21-197	1	Bushing



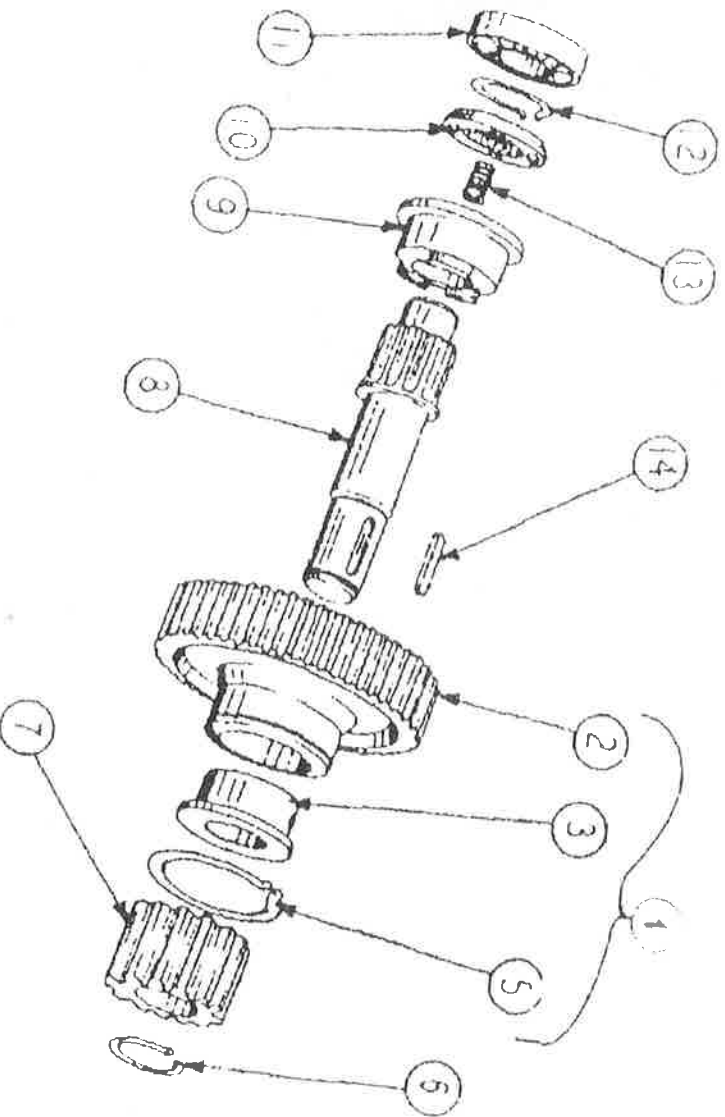


EIMCO 632 H LOADER

Transmission Gear Group

TRANSMISSION GEAR GROUP - (211-5291)

Item no:	Part no:	Max Qty:	Description:
1	211-5292	1	Coupling Gear Group (incl. items 2 thru 5)
2	211-5328	1	Gear
3	211-5310	1	Bushing
4	210-6036	1	Dowel
5	LM0850	1	Snap Ring
6	LM0380	1	Snap Ring
7	211-5315	1	Pinion
8	211-5325	1	Shaft
9	211-5326	1	Coupling
10	211-5307	1	Coupling Washer
11	G117	1	Bearing
12	LM0400	1	Snap Ring
13	211-5311	4	Spring
14	E92L	1	Key

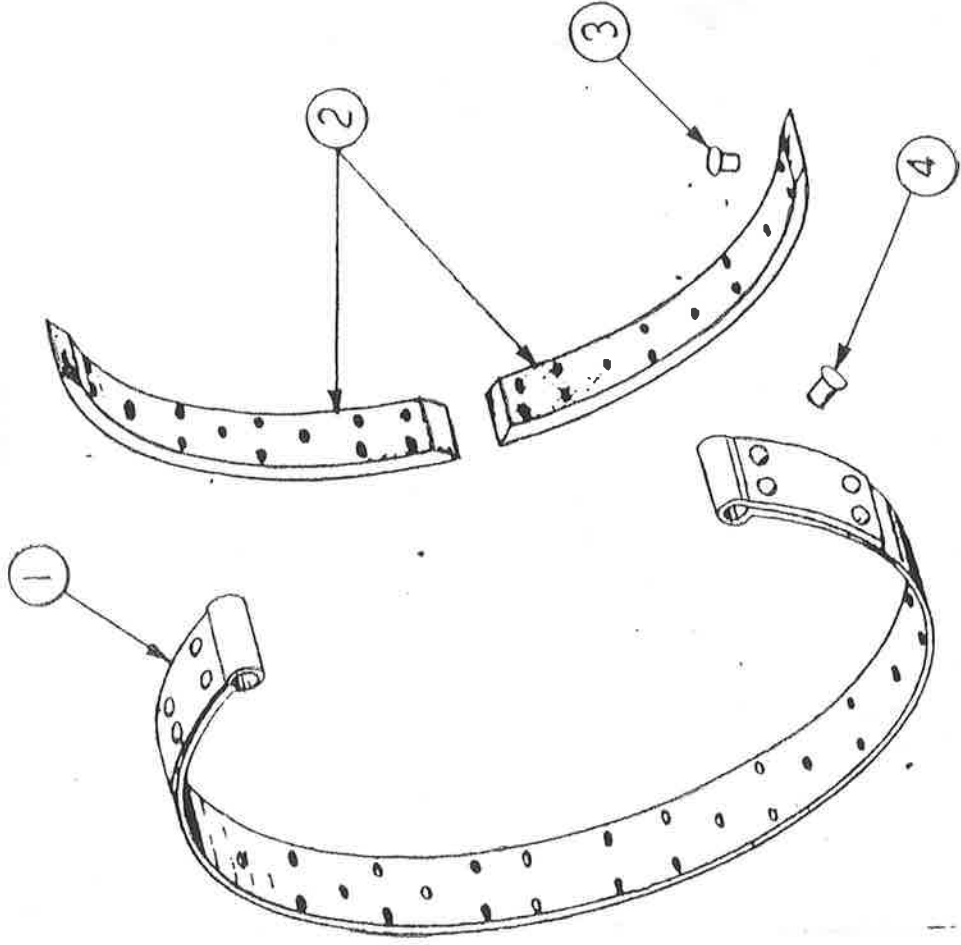


EIMCO 632 H LOADER

Brake Band Group

BRAKE BAND GROUP - (211-5295)

Item no:	Part no:	Max Qty:	Description:
1	211-5332	1	Brake Band
2	211-5330	2	Brake Lining
3	210-6022	32	Rivet
4	210-6023	8	Rivet

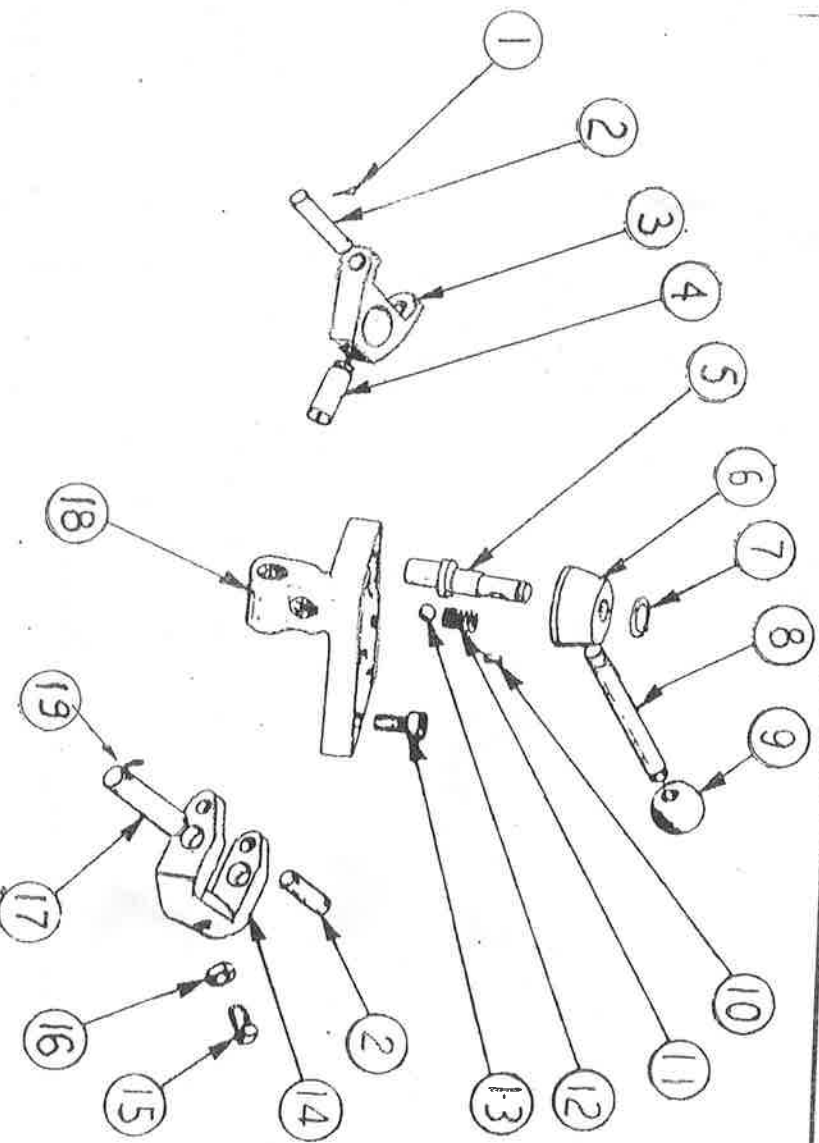


FIMCO 632 H LOADER

Brake Group

BRAKE GROUP - (211-5296)

Item no:	Part no:	Max Qty:	Description:
1	L126	4	Cotter Pin
2	211-5319	2	Pin
3	211-5320	1	Brake Fork
4	211-5317	1	Brake Fork Pin
5	211-5306	1	Brake Cam
6	211-5313	1	Hub
7	LM0280	1	Snap Ring
8	211-5305	1	Brake Handle
9	210-019	1	Ball
10	D92E	1	Key
11	210-5048	1	Spring
12	GH6	1	Ball
13	8GH20	4	Cap Screw
14	211-5312	1	Brake Fork
15	210-5045	1	Screw
16	8GG	1	Nut
17	211-5318	1	Pin
18	211-5331	1	Brake Support
19	L127	2	Cotter Pin

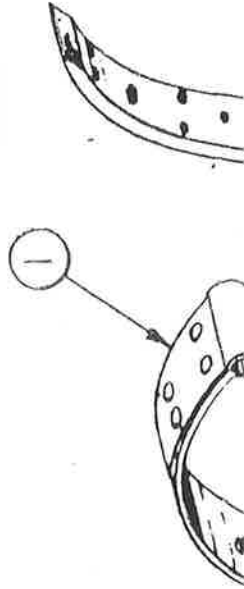


EIMCO 632 H LOADER

Brake Band Group

BRAKE BAND GROUP - (211-5295)

Item no:	Part no:	Max Qty:	Description:
1	211-5332	1	Brake Band
2	211-5330	2	Brake Linning
3	210-6022	32	Rivet
4	210-6023	8	Rivet



10	86G	1	Nut
17	211-5318	1	Pin
18	211-5331	1	Brake Support
19	L127	2	Cotter Pin

