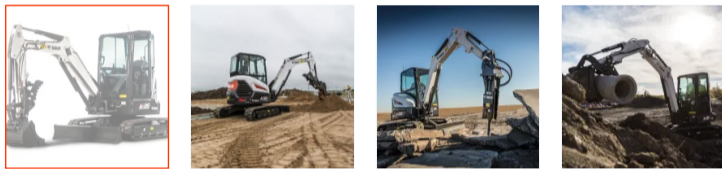


[Home](#) ▶ [Equipment](#) ▶ [Mini Excavators](#) ▶ [3-4t Mini Excavators](#) ▶ [E35 Mini Excavator](#)

E35 Mini Excavator



Part of the R-Series, the Bobcat® E35 compact (mini) excavator is a popular choice in the 3-ton size class. Zero Tail Swing (ZTS) provides unrestricted rotation, greater flexibility and reduced potential for damage to the machine and surrounding property. It's available with an angle blade option, long arm option or clamp-ready extendable arm option. Upgrade to an optional 33 hp engine for even more productivity.

[Request a Quote](#)

[Find a Dealer](#)

[Download Brochure](#)

[Download Leaflet](#)

E35 Features

[Expand all](#)

Performance ¹²

Uptime Protection ¹⁰

Comfort ⁷

Serviceability ³

Attachment ²

E35 Specifications

Key Specifications

E35 Mini Excavator

Horsepower

33.2 hp

Operating Weight

3580 kg

Dig Depth

3077 mm

Excavator
E35 Mini Excavator
Series
R2
Tail Swing Type
Zero
– Tail Swing Overhang
10 mm
Weight
3580 kg
Dig Depth
3077 mm
Reach @ Ground Level
5190 mm
Dump Height Clearance
3380 mm
Width
1769 mm
Ground Pressure
32.6 kPa
– Standard Track Width
300 mm

Performance
E35 Mini Excavator
Arm Breakout Force
20,861 N
Bucket Breakout Force
32,402 N
(Over blade, ground level, 10 ft. (3 m) reach)
1505 kg
(Over side, ground level, 10 ft. (3 m) reach)
697 kg
Travel Speed: Low/High
2.6/4.7 km/hr

Long Arm Option Performance
E35 Mini Excavator
Tail Swing Type/Overhang
80 mm
Weight (with Long Arm & Counterweight)
3900 kg
Dig Depth
3377 mm
Reach @ Ground Level
5480 mm
Dump Height Clearance
3561 mm

Extendable Arm Option Performance
E35 Mini Excavator
Tail Swing Type/Overhang
80 mm
Weight (with Extendable Arm & Counterweight)
4003 kg
Dig Depth
3892 mm
Reach @ Ground Level
5972 mm
Dump Height Clearance

3847 mm

▲ Engine

E35 Mini Excavator

Horsepower

33.2/24.7 hp/kW

Engine Type

Tier 4

Fuel Tank Capacity

52 L

▲ Hydraulics

E35 Mini Excavator

Piston Pump

Yes

Load-Sensing Pump

Yes

▲ Machine Features & Options

E35 Mini Excavator

Angle Blade

-

Auto-Idle Throttle

Standard

Auto-Shift Travel System

Standard

Automatic Slew Brake

Standard

Blade Float

Standard

Cab with Heat

-

Cab with Heat and A/C

Standard

Control Pattern Selector

Standard

Deluxe Cloth Seat

Standard

Fingertip Boom Swing Control

Standard

Fold-Down TOPS

-

Keyless/Password Start System

Optional

Retractable Undercarriage

-

Steel Tracks

Optional

▲ Features for Attachments

E35 Mini Excavator

Auxiliary Hydraulics with Quick Couplers

Standard

Auxiliary Hydraulic Flow

63.9 L/min

Auxiliary Hydraulic Pressure

206 bar

Fingertip Auxiliary Control

Standard

Secondary Auxiliary Hydraulics

Selectable Auxiliary Flow

Standard

Similar Machines



E10e Mini Excavator

Thanks to the E10's innovative Lithium-Ion battery pack, you can operate throughout an 8-hour day with minimal charging breaks.

Horsepower	10 hp
Operating Weight	1201 kg
Dig Depth	1820 mm



E10z Mini Excavator

With the Bobcat E10z's retracted track and pivot flexibility, you can operate in confined areas other machines can't handle.

Horsepower	10.1 hp
Operating Weight	1176 kg
Dig Depth	1800 mm



E17z Mini Excavator

With the Bobcat E17z mini exca performance, you can handle bi

Horsepower	10.1 hp
Operating Weight	1176 kg
Dig Depth	1800 mm



REGION SELECTOR

OCEANIA (ENGLISH)

EQUIPMENT

LOADERS

MINI EXCAVATORS

TELEHANDLERS

TOOLCAT™ UTILITY WORK MACHINE

ZERO-TURN MOWERS

ATTACHMENTS & IMPLEMENTS

LEGAL

PRIVACY POLICY

TERMS OF USE

HELP CENTER

FREQUENTLY ASKED QUESTIONS (FAQS)

CONTACT US

FIND A DEALER



One Tough Animal

DOOSAN

Bobcat Company is a member of the Doosan Group. Doosan is a global leader in construction, grounds maintenance and material handling equipment, power and water solutions, and engineering that has proudly served customers and communities for more than a century.

Bobcat®, the Bobcat logo, the colors of the Bobcat machine, and various other product names referenced on this website are trademarks of Bobcat Company in the United States and various other countries.

©2024 Bobcat Company. All rights reserved.