



- JCB's smallest ever telescopic handler packs big performance into compact dimensions
- At just 1.8m tall and weighing under 3.5 tonnes, the Miniscopic brings JCB loadall performance to previously inaccessible work sites
- 4-wheel drive, 4-wheel steer and hydrostatic transmission equals efficient manoeuvrability in restricted space
- Spacious cab features adjustable deluxe suspension seat and optional air conditioning for day-long comfort
- A choice of quickhitch for skid steer or compact loadall attachment compatibility results in maximum versatility

MAX. PAYLOAD: 1.5 tonnes (3307lb) MAX. LIFT HEIGHT: 4.0m (13ft 1in) MAX. POWER: 36.8kW (50hp)

STATIC DIMENSIONS

Overall height	m (ft-in)	1.8 (5-11)
Overall width	m (ft-in)	1.56 (5-1)
Interior width of cab	m (ft-in)	0.87 (2-10)
Wheelbase	m (ft-in)	1.75 (5-9)
Overall length to front of tyres	m (ft-in)	2.80 (9-2)
Overall length to front of carriage	m (ft-in)	3.23 (10-7)
Ground clearance	m (ft-in)	0.24 (0-10)
Outer turn radius over tyres	m (ft-in)	2.8 (9-2)
Weight	kg (lb)	3480 (7672)
Tyres – traction		255/75-15.3

HYDRAULICS

Operating system pressure	bar (psi)	230 (3336)
Flow at system pressure (@2800rpm)	ltr/min (gal/min)	47.6 (10.5)
Cycle times		
Boom raise	seconds	7.3
Boom lower	seconds	5.4
Extend	seconds	5.8
Retract	seconds	3.7

ENGINE

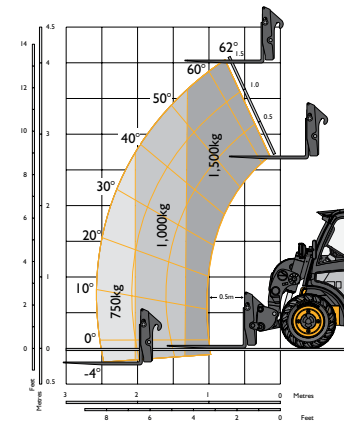
Model	Deutz D2009LO4	
Cylinders	4	
Fuel	Diesel	
Displacement	ltr	2.3
Cooling	Liquid	
Bore	mm (in)	90 (3.5)
Stroke	mm (in)	90 (3.5)
Gross power @ 2800rpm ISO14396	kW (hp)	36.8 (50)
Gross torque @ 1800rpm ISO14396	Nm (lbf/ft)	146 (107.68)
Emissions certification	EC stage IIIA/USA EPA Tier 3	
Engine oil service intervals	Hours	500

OPTIONS AND ACCESSORIES

Work lights. Road lights. Rotating flashing beacon. Fire extinguisher. Front screen guard. Sun blind. Traction, industrial or semi-turf tyres. Chaff guard. Canopy. Mechanical compact loadall quickhitch or skid steer quickhitch. Attachments: GP shovel with teeth or toeplate. 6-in-1 shovel. Industrial or floating forks. Muck fork and grab. Sweeper.

LIFT PERFORMANCE

Compact loadall quickhitch		
Lift capacity at full height	kg (lb)	1500 (3307)
Lift capacity at full reach	kg (lb)	750 (1653)
Maximum lift height	mm (ft-in)	4045 (13-3)
Reach at maximum lift height	mm (ft-in)	460 (1-6)
Maximum reach forward	mm (ft-in)	2535 (8-4)
Payload at 2m boom extension	kg (lb)	1000 (2005)



CAB

Quiet, safe and comfortable cab conforms to ROPS ISO3471 and FOPS ISO3449. Interior noise 85Lpa. Radio console. Arm rest. Tinted glass all round with laminated front and roof screen. Front, rear screen wash/wipe and heater/screen demister. Opening door window. Optional air conditioning or face-level fan. Visual warning system for coolant temperature, engine oil pressure, air cleaner, battery charge, transmission oil pressure, engine temperature, fuel gauge and hourmeter. Boom control lever incorporating forward/reverse switch. Throttle and brake pedals floor mounted. Optional fabric or vinyl adjustable deluxe suspension seat with side mounted park brake lever. Automatic eye level audio-visual load moment indicator warning system receiving a signal from a load sensor on the rear axle. This system continuously monitors the machine's forward stability and leaves the operator in control at all times.

TRANSMISSION

Hydrostatic transmission. Closed loop variable displacement piston pump with twin displacement transmission on wheel motors. Transmission inching facility on operation of a combined inching and braking pedal. Front and rear drive axles: Permanent 4-wheel steer and 4-wheel drive. Rear axle oscillation. Automatic torque transfer system between front and back axles. Maximum travel speed 20kph (12.4mph).